

KANON
LOADING EQUIPMENT



WE CARE
ABOUT
LOADING
SYSTEMS



崑政企業有限公司
TEL:04-2435 0378 FAX:04-2435 0376
台中市北屯區建和路二段219巷11號
www.cust-technology.com

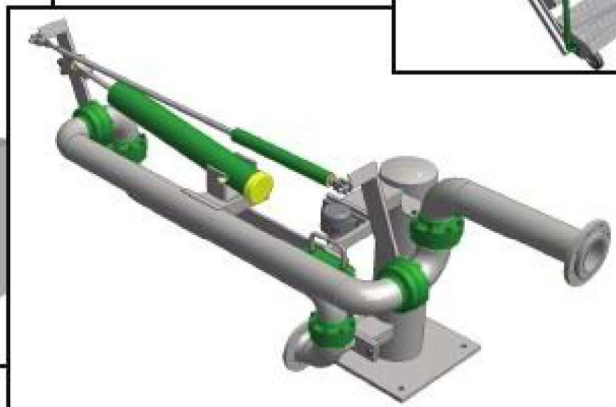
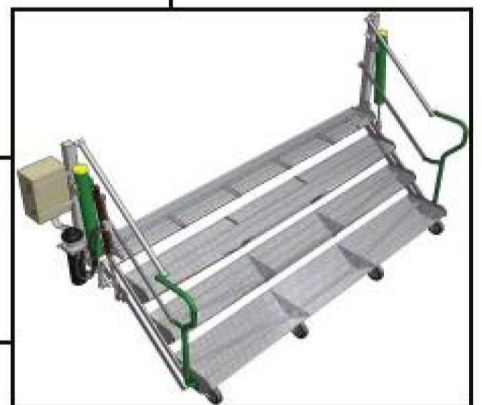
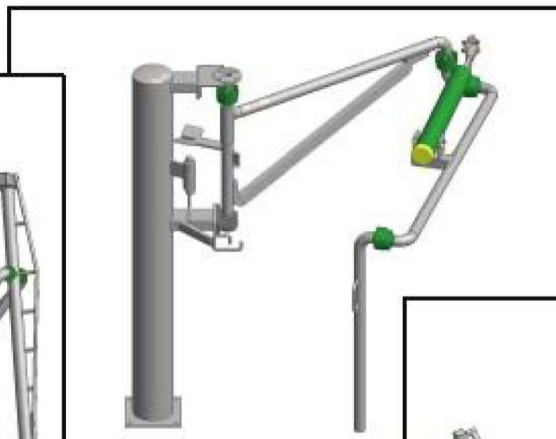
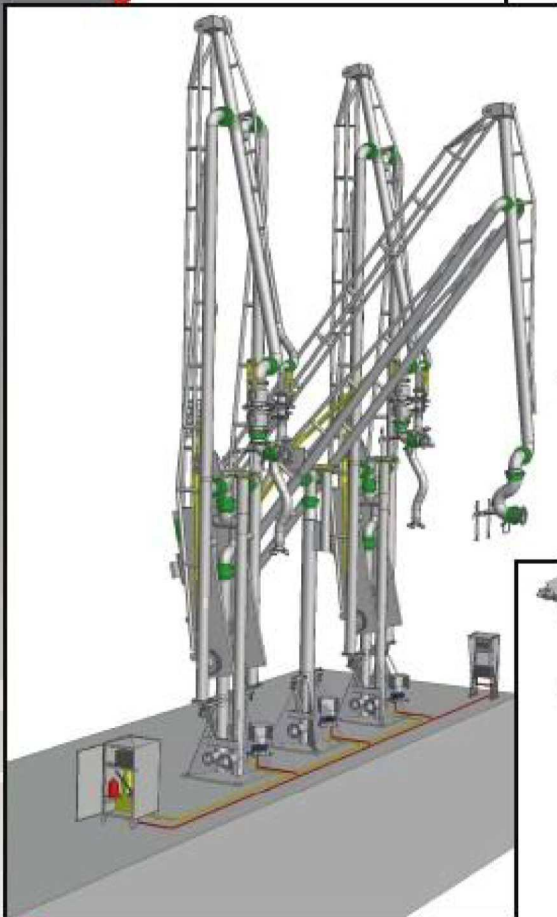
Loading equipment for marine, road, and rail tankers

1979年Lex H.J. Kanon先生成立KANON公司以來，KANON已在全球提供了數千套卸料臂系統。

其中許多系統都是“客制化”甚至是“量身定制的”，有時使用非傳統的方式，滿足特定要求來解決方案，為每種情況提供“最適當組合”，這是KANON成功的原因之一。

本型錄為您提供最常見的KANON組合方案，為您的卸料臂設計提供安全及高效能。

型錄並非絕對提供所有解決方案; 如果未找到符合您的需求，請不要猶豫，通過崑政公司與我們聯繫，讓KANON團隊為您服務!

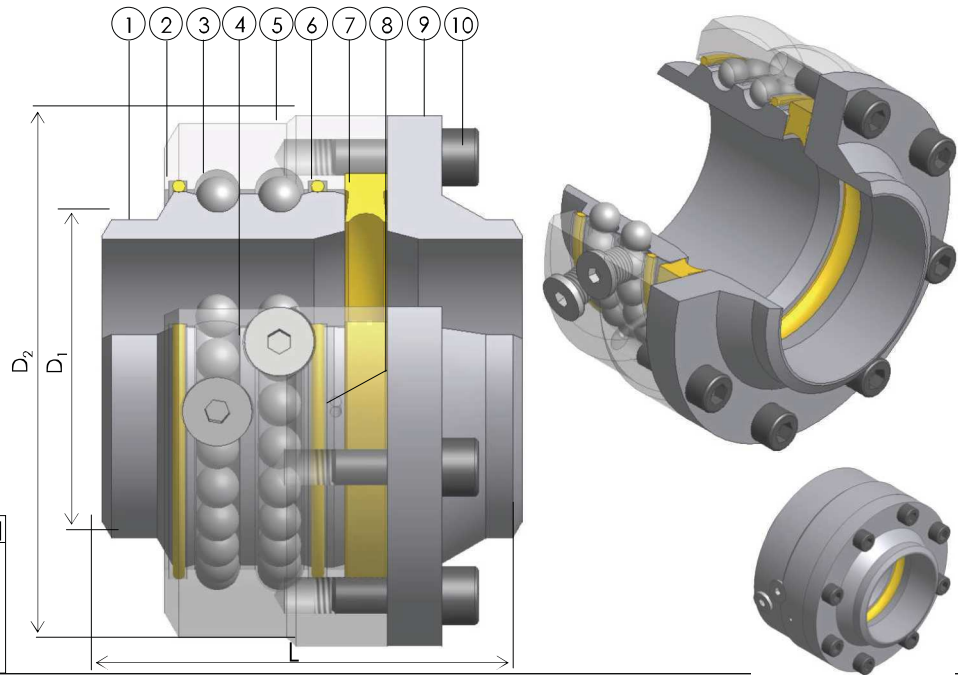


Swivel Joint SAN831

Full bore
Multi purpose
Bulletin SAN831

The SAN831 swivel joint is a KANON standard swivel joint, suitable for a wide range of products. This swivel joint is of a full-bore execution, so there is a minimum pressure drop. It can also be used for piggable systems.

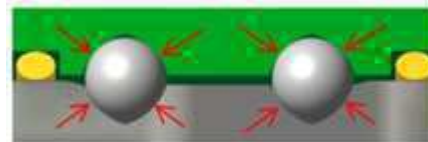
- 1 INNERBODY
- 2 DUST SEAL
- 3 BALL
- 4 PLUG
- 5 OUTERBODY
- 6 BALLRACE SEAL
- 7 PRODUCT SEAL
- 8 FUNCTION CHECK
- 9 FLANGE
- 10 PLUG



D	D ₁	D ₂	L	Weight [N]
1"	33.4	80	100	25
2"	60.3	118	115	48
3"	88.9	148	115	66
4"	114.3	180	115	85

Specific features:

- High load bearing capability due to:
 - 4 point contact ball races
 - larger balls
- Dust seal to prevent soiling.
- Long life lubrication.
- Double ball races.
- Function check, between product and ball race seal.
- Replacing the product seal can be done without removing the balls.
- The dual seal design protects the ball race chamber against penetration of fluid and dust.
- The dynamic seal face of the inner body is provided with a polished stainless steel surface for long and excellent sealing.
- Maximum pressure : 63 bar
- Temperature range : -70°C up to +310°C



Materials:

- Outerbody : S355, AISI 316, AISI 304L, 34CrNiMo6, Low temp. carbon steel.
- Innerbody : AISI 316L, AISI 304L, Duplex Stainless Steel.
- Flange : S355, AISI 316L, AISI 304L, Low temp. carbon steel.
- Product seal : PTFE, PTFE-C, Viton, UHMW-PE, FDA approved PUR, NBR.

Options:

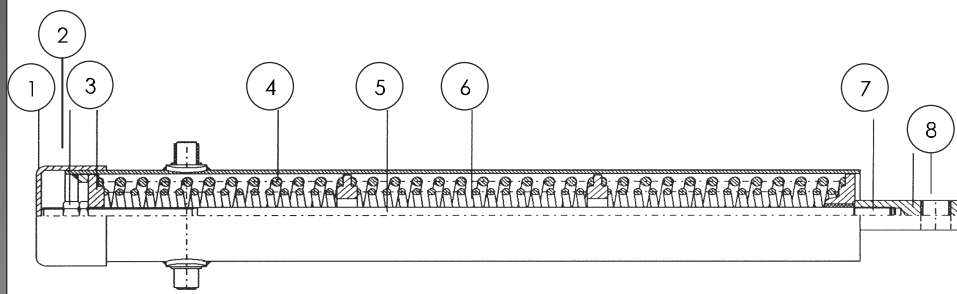
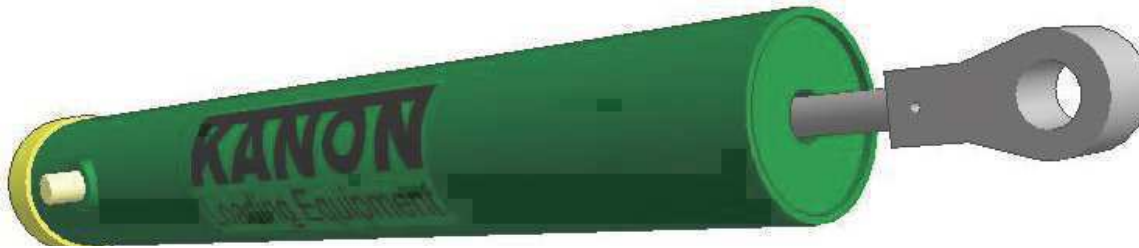
- Jacketing.
- Purge connection.
- Hastelloy seal face.
- Flanges on both sides.
- Single ball race (SAN830)

Multi-spring Balance cylinder

General Description

This spring cylinder is used in all KANON Folding Stairs, Top Loading Arms and Bottom Loading Arms.

The spring cylinders are provided with high quality compression-spring packages, which ensure steady balance, easy handling and high safety. Pneumatic or hydraulic activation can be applied as an option.



- 1 Dust cap
- 2 Clamping nuts
- 3 Spring bracket
- 4 Spring
- 5 Cylinder body
- 6 Piston rod
- 7 Rod eye
- 8 bearing bush

Specific features:

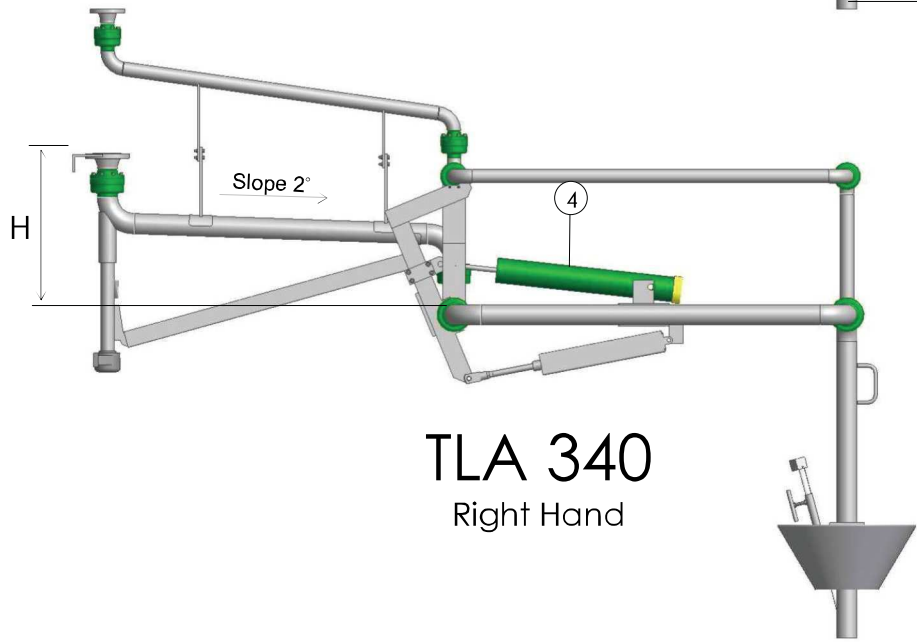
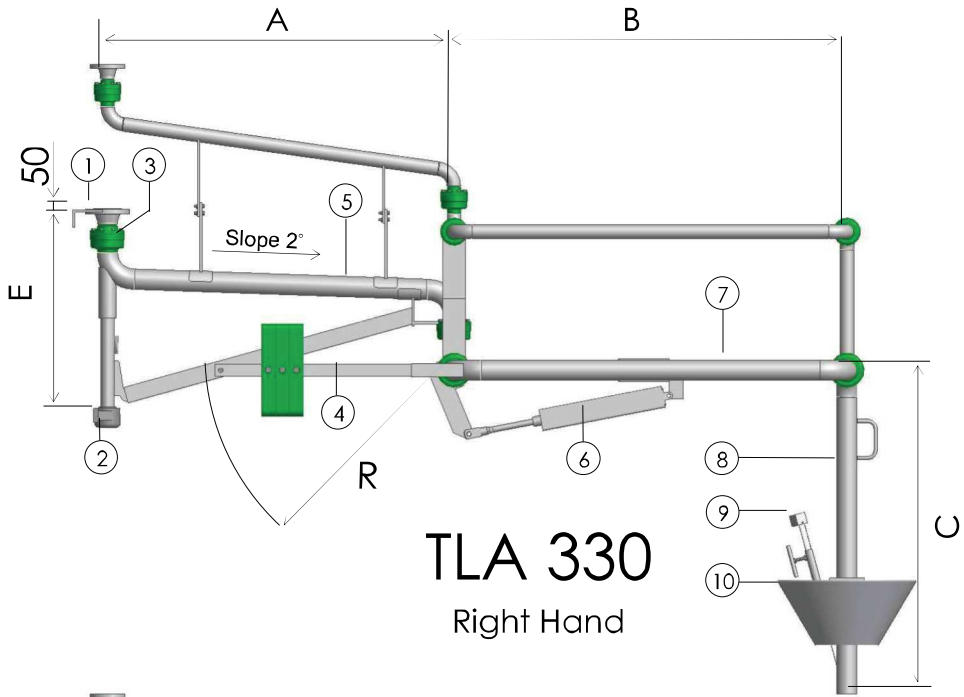
- Fail-safe design. If a spring breaks, only slight unbalance will occur. Loading arm or folding stairs will *never* drop down spontaneously.
- Easy one-man operating of loading arms and folding stairs.
- When operating conditions require so, coarse- and fine- adjustment of balancing are possible.
- No maintenance.
- Operator safety prevails in design conditions.
- Very long life compared to torsion spring-type cylinders.

Specific feature when operated pneumatically or hydraulically:

- In case of pneumatic or hydraulic power-failure, arm or folding stair is still completely balanced and can be operated manually.

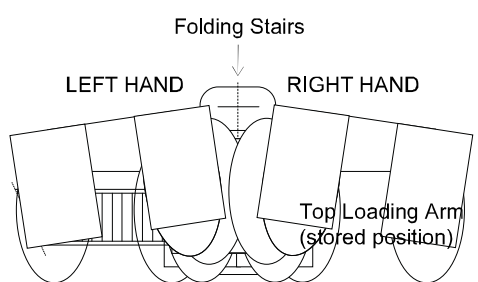
Top Loading Arms

With vapour recovery line
Bulletin 330340



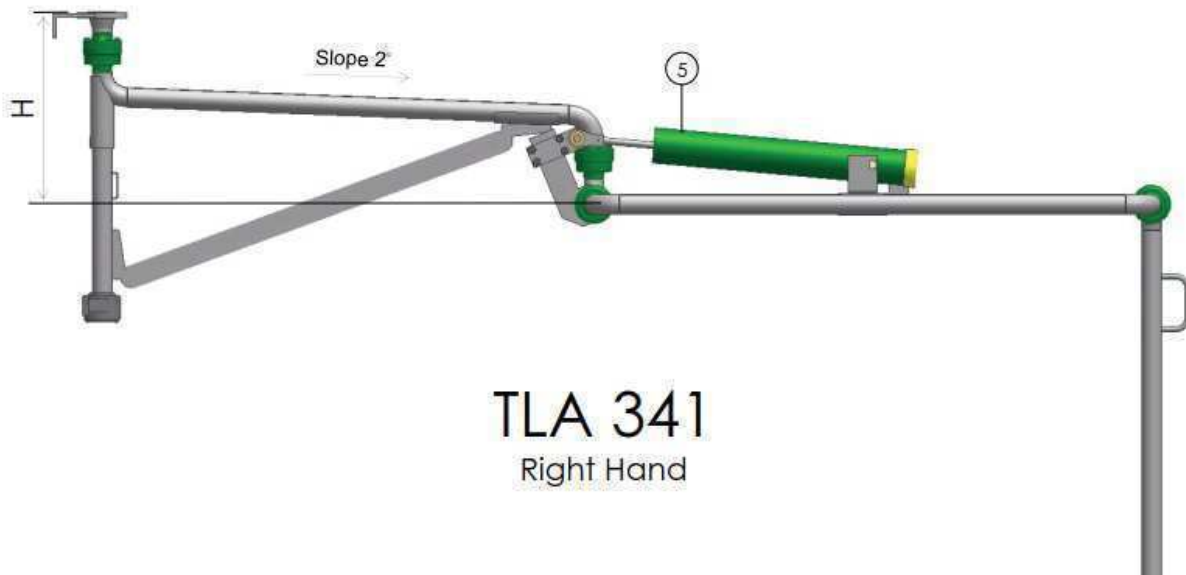
- 1 Inletflange
- 2 Pillar bearing
- 3 Swivel joint
- 4 Counterweight (330) or Balance cylinder (340)
- 5 A-pipe
- 6 Press down cylinder
- 7 B-pipe
- 8 C-pipe
- 9 Top level control
- 10 Cone

	2"	3"	4"	6"
A	1500	1500	1500	1700
B	1700	1700	1700	2000
C	1500	1500	1500	1500
E	850	850	850	850
H	559	679	794	1235
R	1200	1200	1200	1500

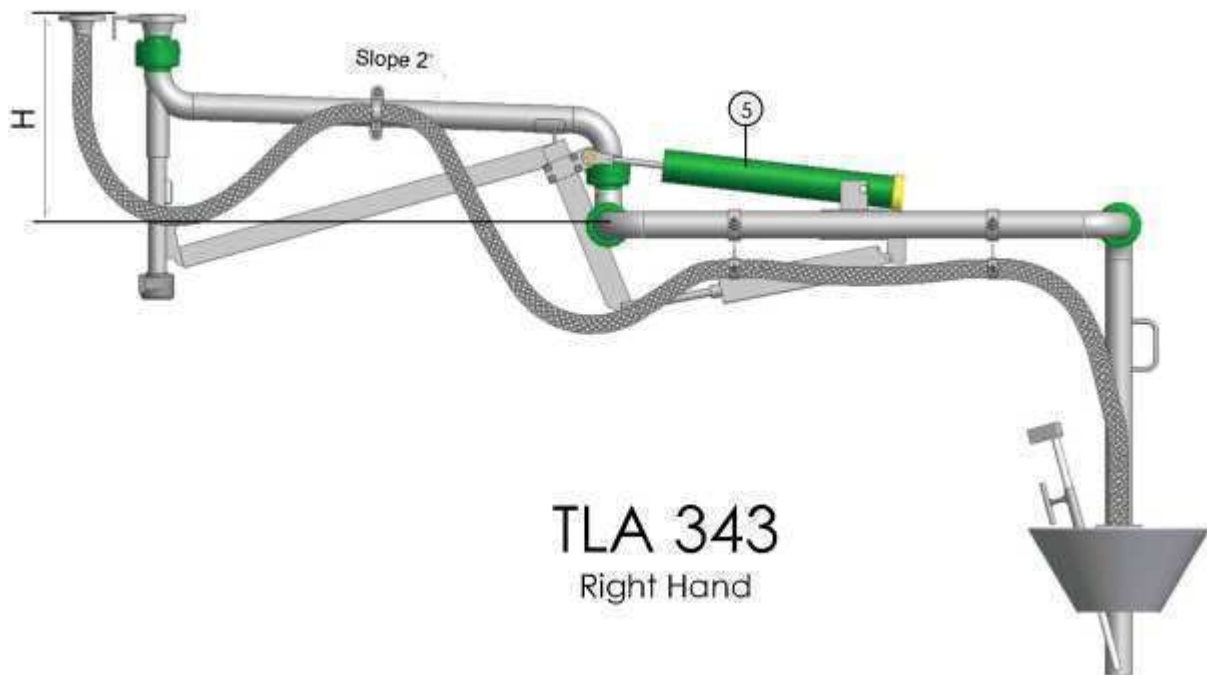


Top Loading Arms

With vapour recovery hose
Bulletin 333343

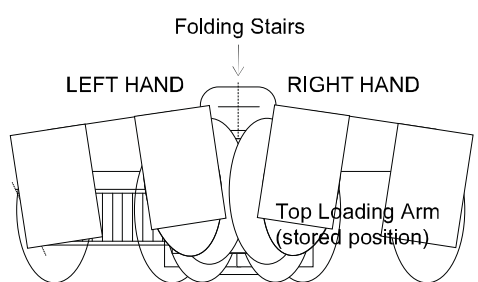


TLA 341
Right Hand



TLA 343
Right Hand

	2"	3"	4"	6"
A	1500	1500	1500	1700
B	1700	1700	1700	2000
C	1500	1500	1500	1500
E	850	850	850	850
H	559	679	794	1235
R	1200	1200	1200	1500



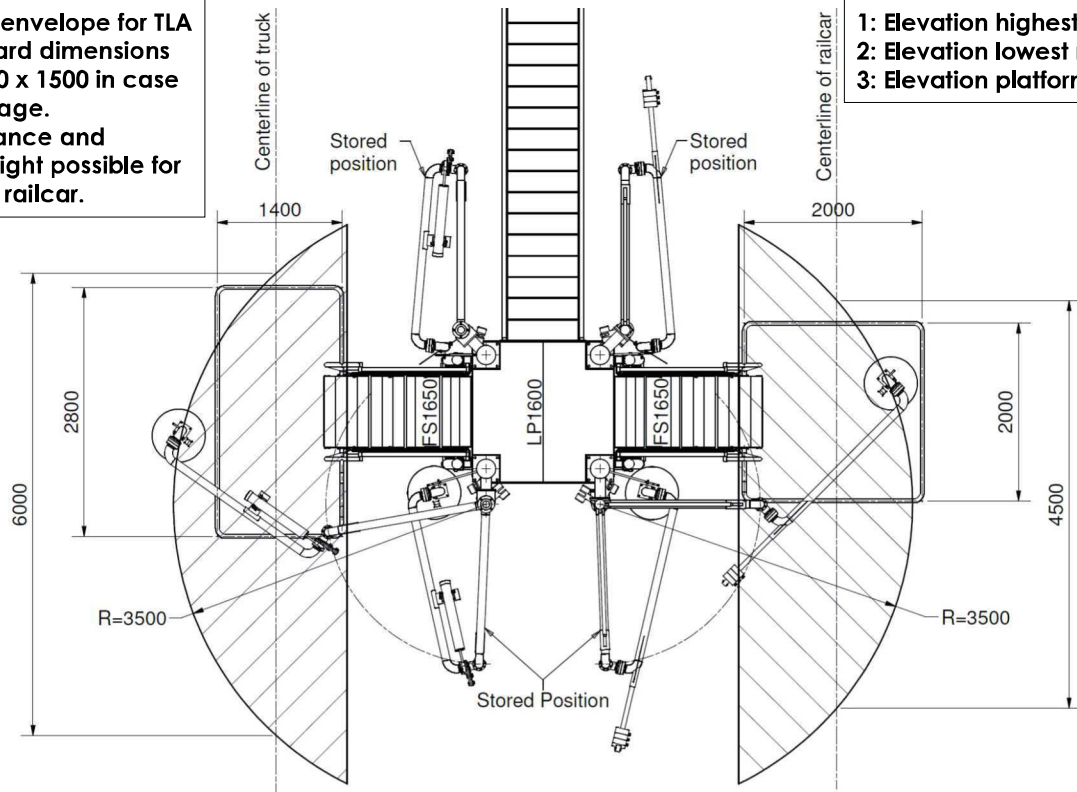
- 1 Inletflange
- 2 Pillar bearing
- 3 Swivel joint
- 4 A-pipe
- 5 Counterweight (333) or Balance cylinder (343)
- 6 Press down cylinder
- 7 B-pipe
- 8 Vapour return hose
- 9 C-pipe
- 10 Top level control
- 11 Cone

Top Loading Arms

Operating Envelope Bulletin 350029

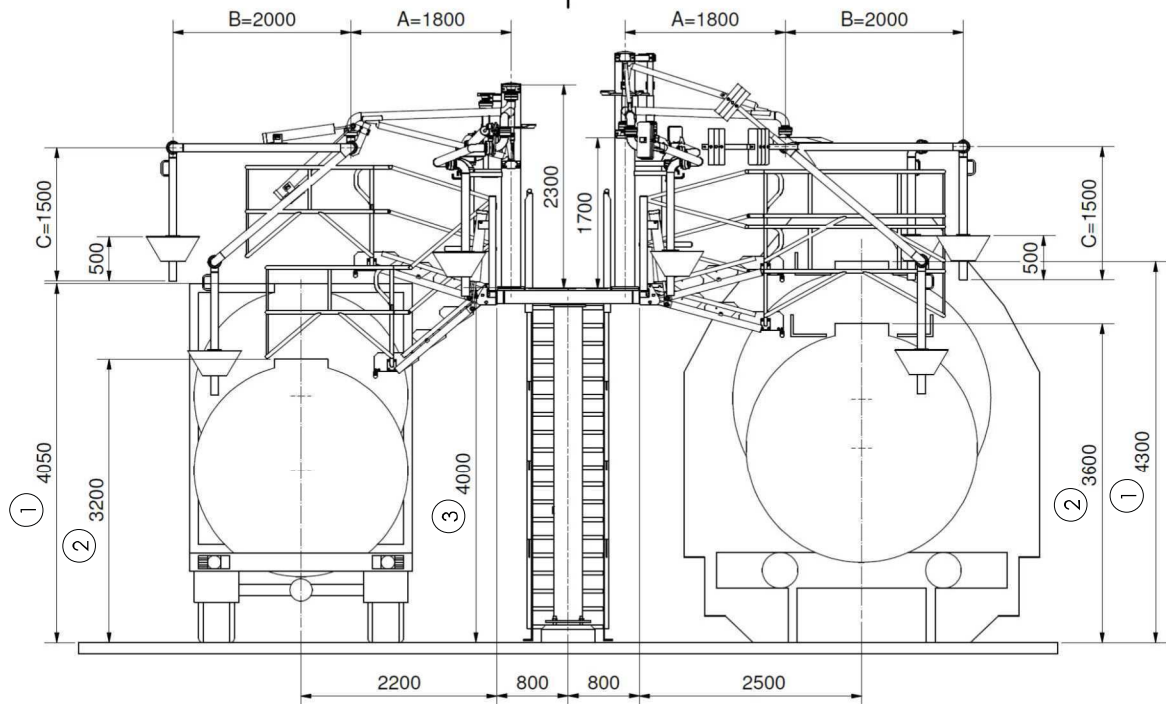
Operating envelope for TLA with standard dimensions 1800 x 2000 x 1500 in case of safety cage. Spring balance and counterweight possible for trucks and railcar.

- 1: Elevation highest manhole
- 2: Elevation lowest manhole
- 3: Elevation platform



Operating envelope for truck loading

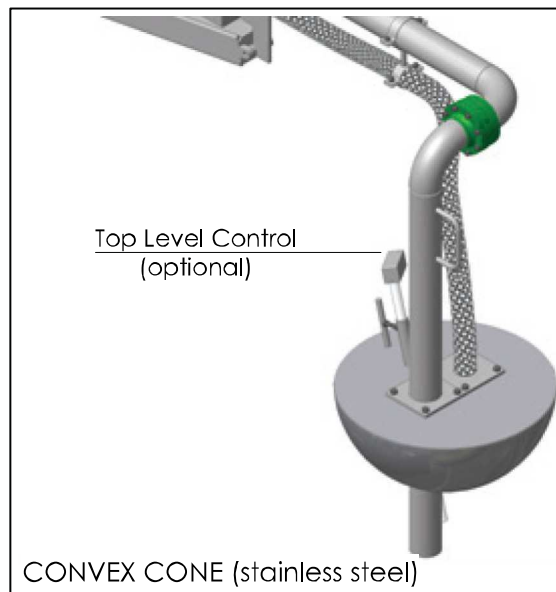
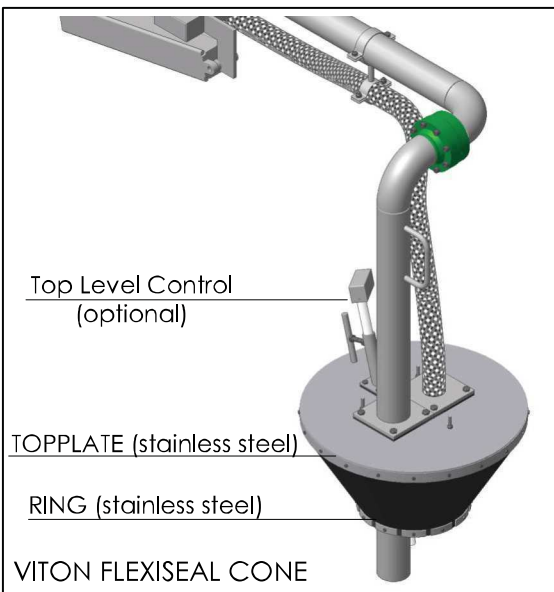
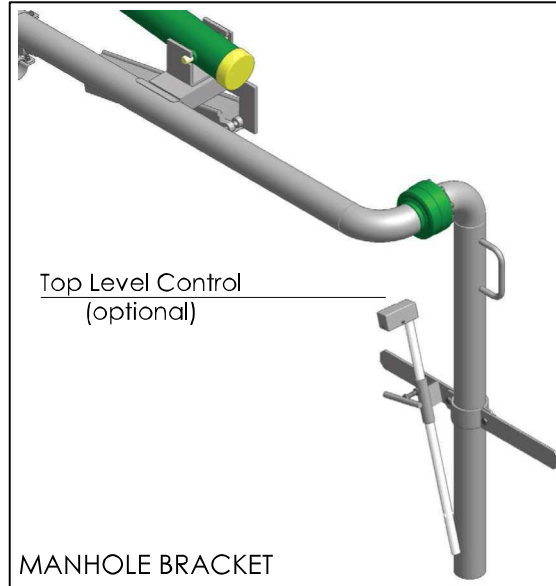
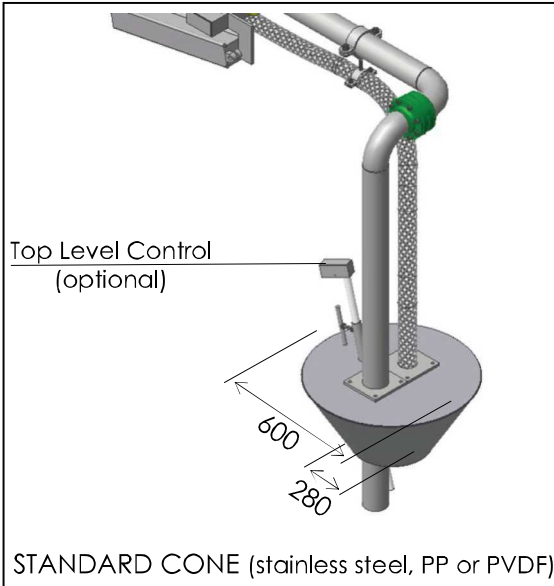
Operating envelope for railcar loading



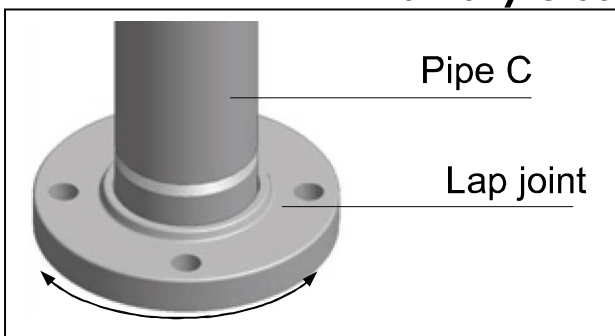
Free Manhole Outlet

For Top Loading Arms
Bulletin 350001

For open or semi-closed loading



For fully closed loading



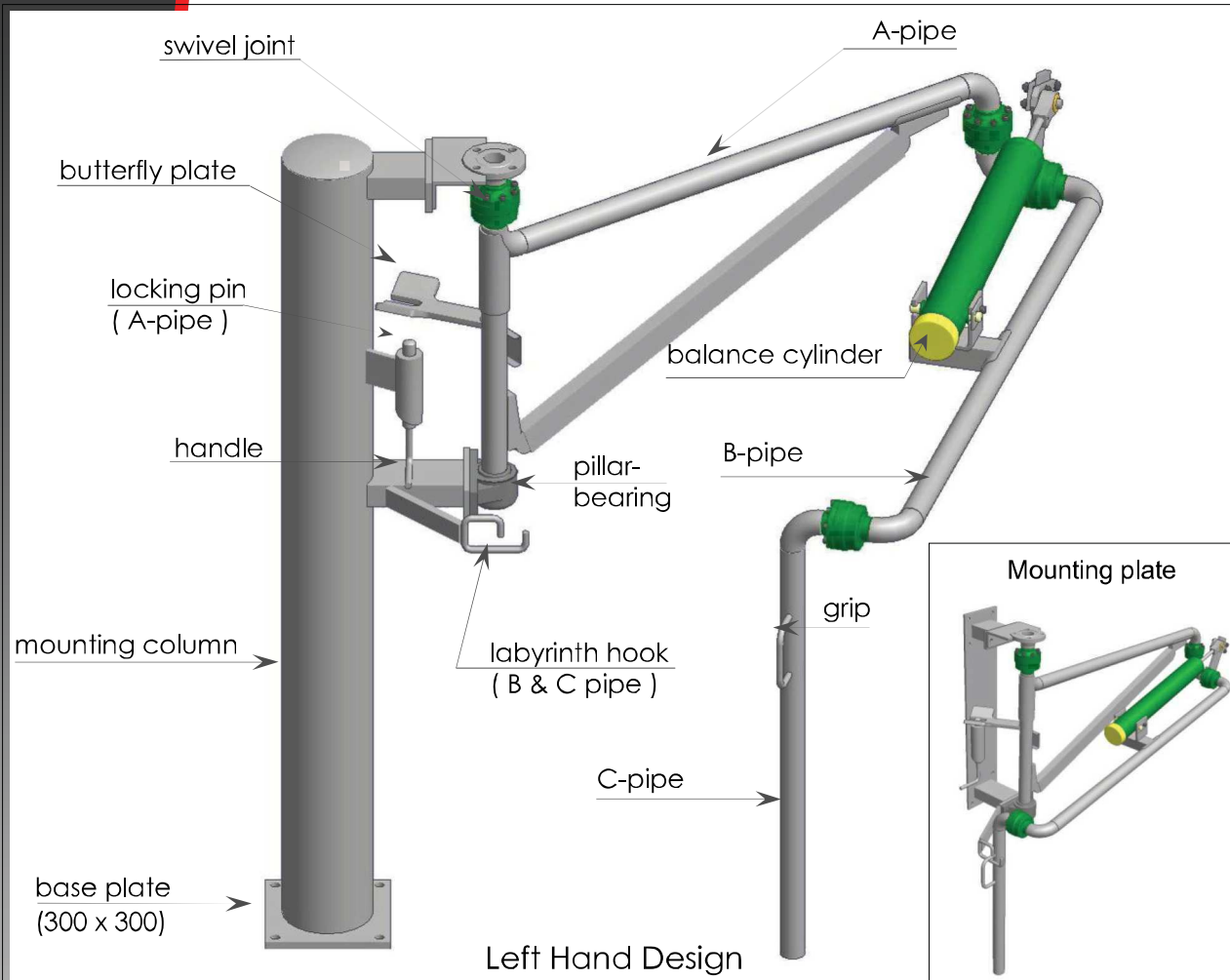
In case of a flanged connection for fully closed loading, an extra 5th swivel joint is needed with vertical balancing. Closed flange is applied to match the holes.

Top Loading Arms

Mounting column / -plate Bulletin 101101

Mounting column/ -plate

Mounting columns or mounting plate are equipped with a double locking device; one for locking of the A-pipe and one for locking of both B-pipe and C-pipe.

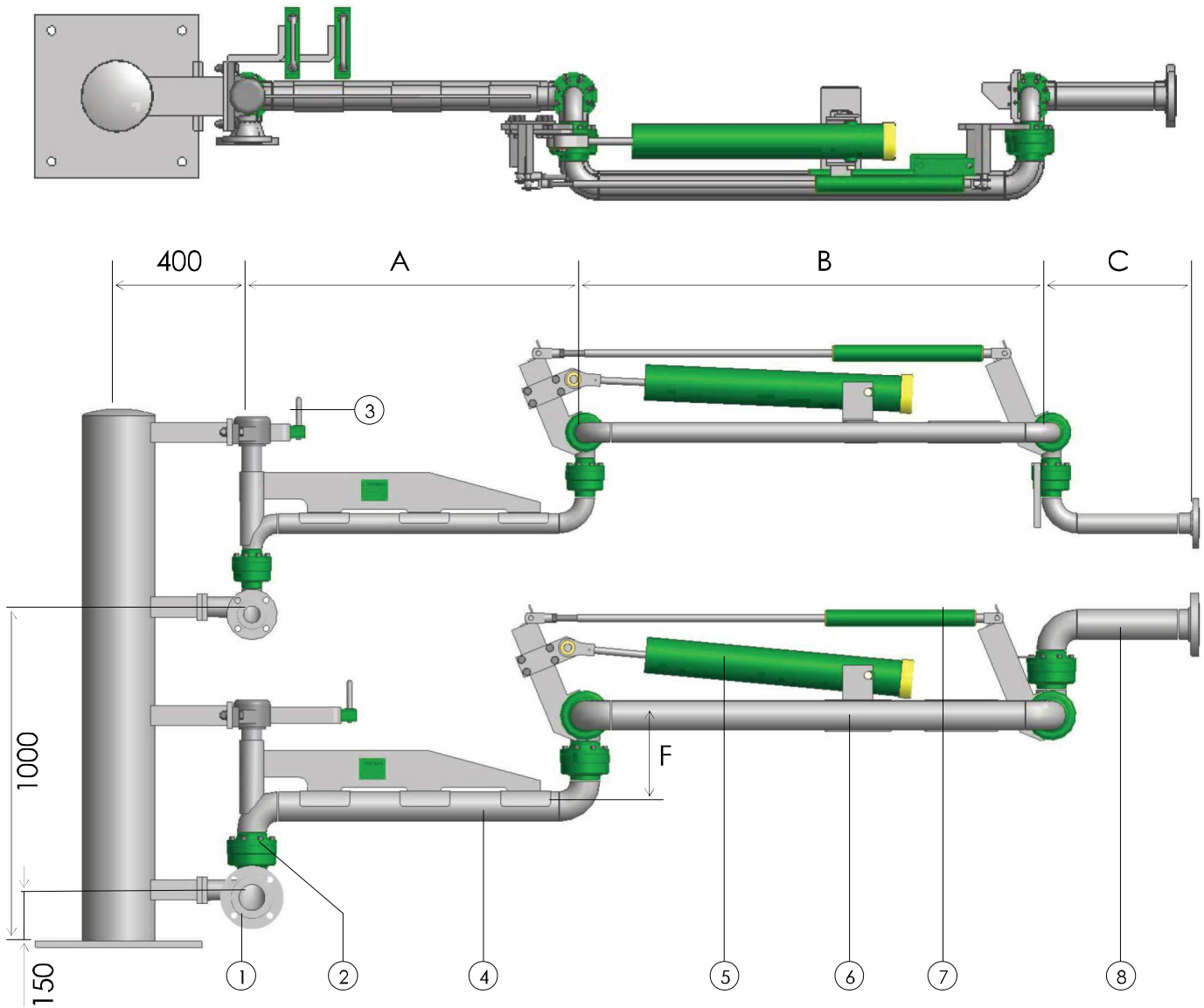


Available options:

- Proximity switch on locking pin for stored position detection
- Galvanised or provided with paint system

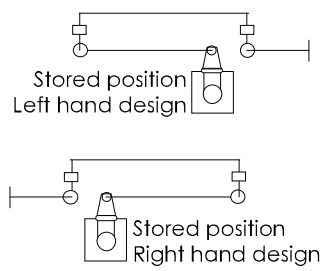
Bottom Loading Arms

**Bulletin
BLA144/145**



Horizontal balancing is a recommended option

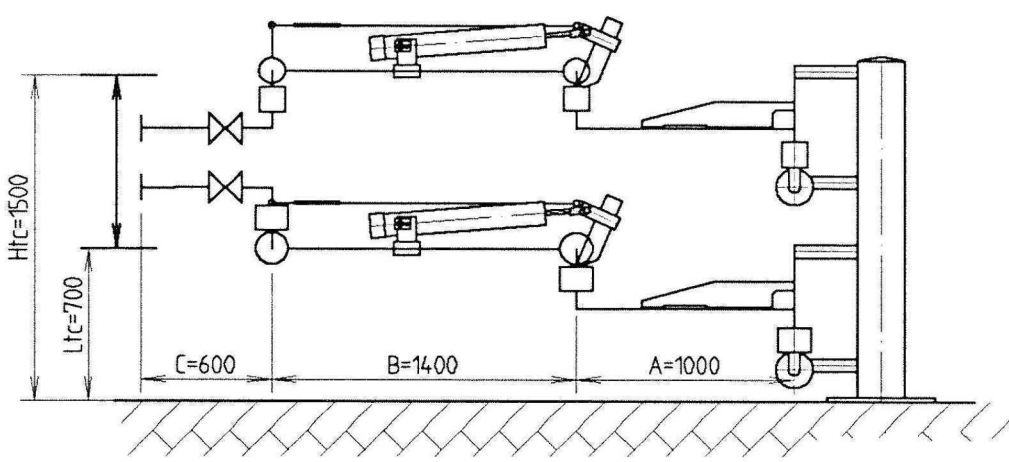
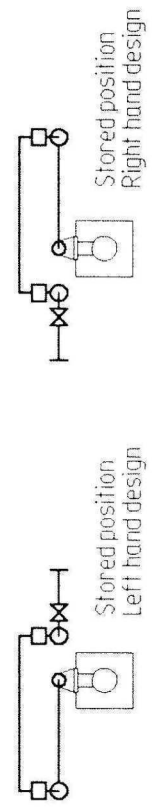
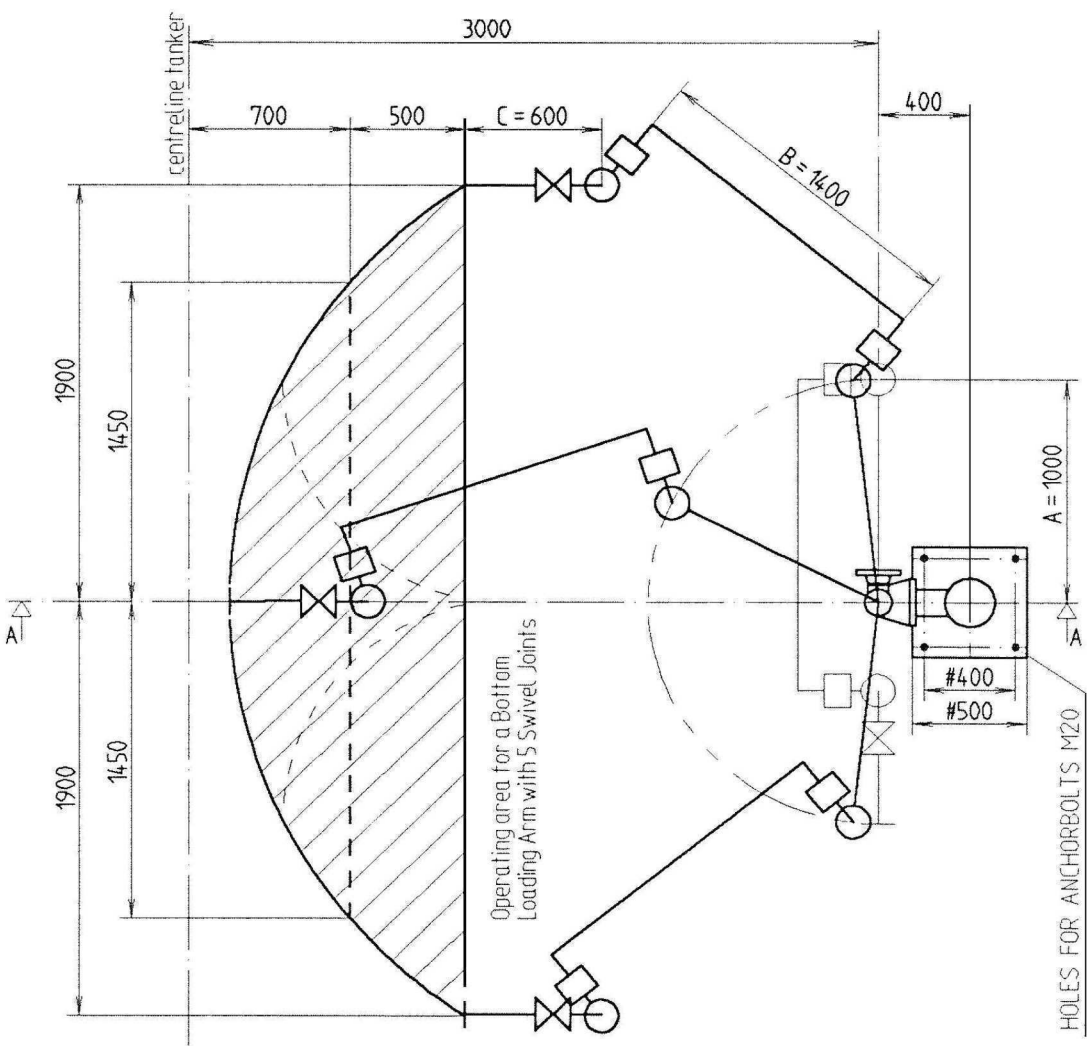
	2"	3"	4"
A	1000	1000	1000
B	1400	1400	1400
C	600	600	600
F	223	272	324



- 1 Inletflange
- 2 Swiveljoint
- 3 Locking device
- 4 A-pipe
- 5 Balance cylinder
- 6 B-pipe
- 7 Horizontal balancer
- 8 C-pipe

Bottom Loading Arms

Operating envelope showing side connect to truck

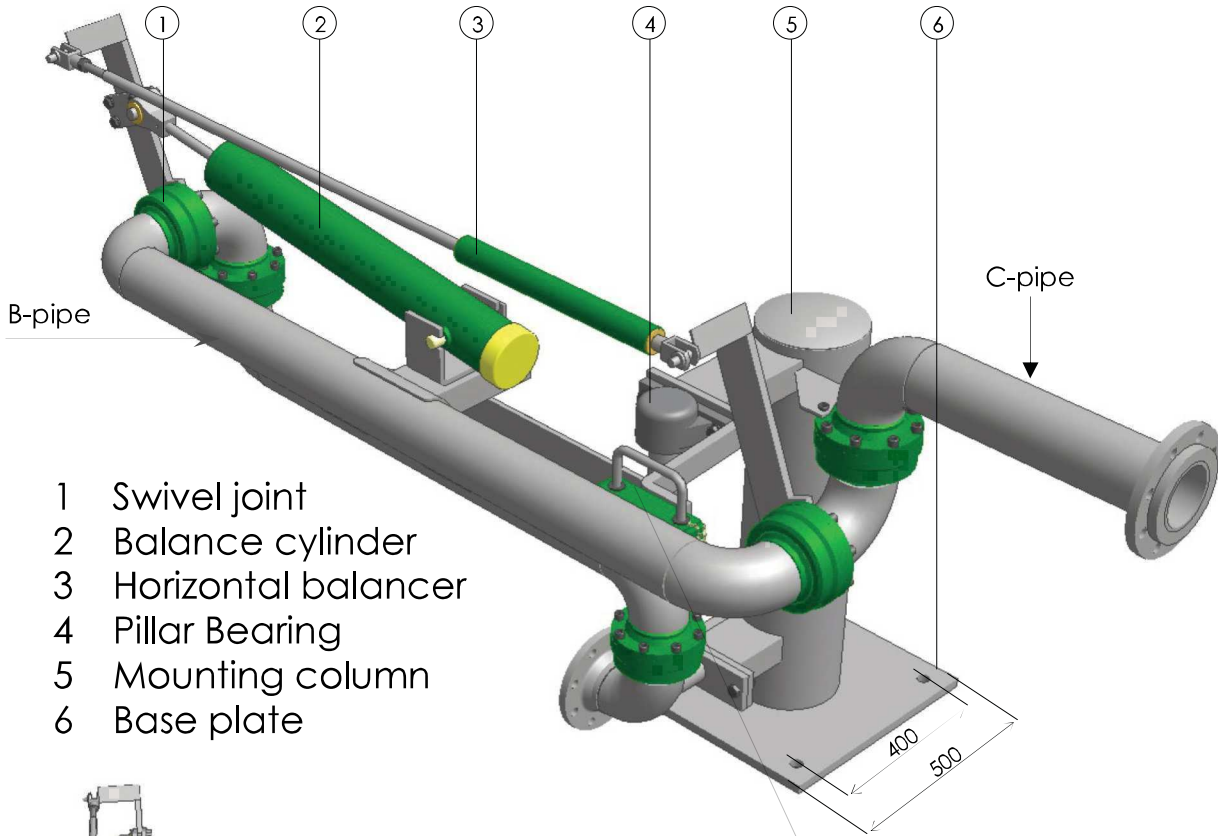


View A-A

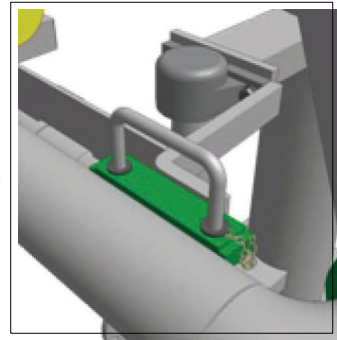
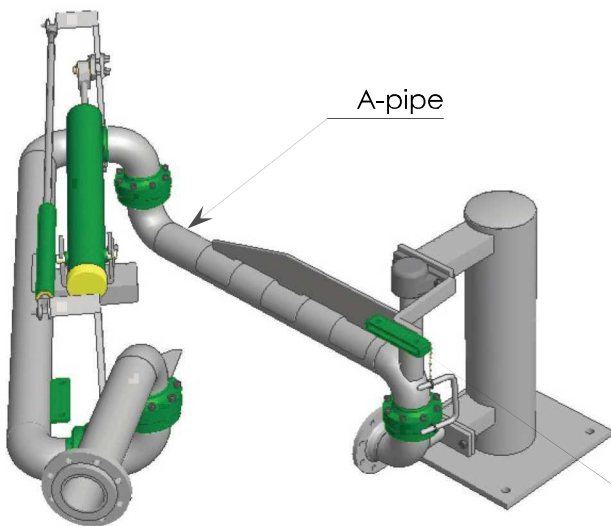
Htc = Highest tanker connection
Ltc = Lowest tanker connection

Bottom Loading Arms

With horizontal balancer,
mounting column and
double locking device
Bulletin 350012



- 1 Swivel joint
- 2 Balance cylinder
- 3 Horizontal balancer
- 4 Pillar Bearing
- 5 Mounting column
- 6 Base plate



Detail of the locking device
Lock and unlock



Jacketing/Break Valve

INSIDE JACKETING

SIZE	D ₁	D ₂
2"	2"	3"
3"	3"	4"
4"	4"	6"

SPIRAL JACKETING

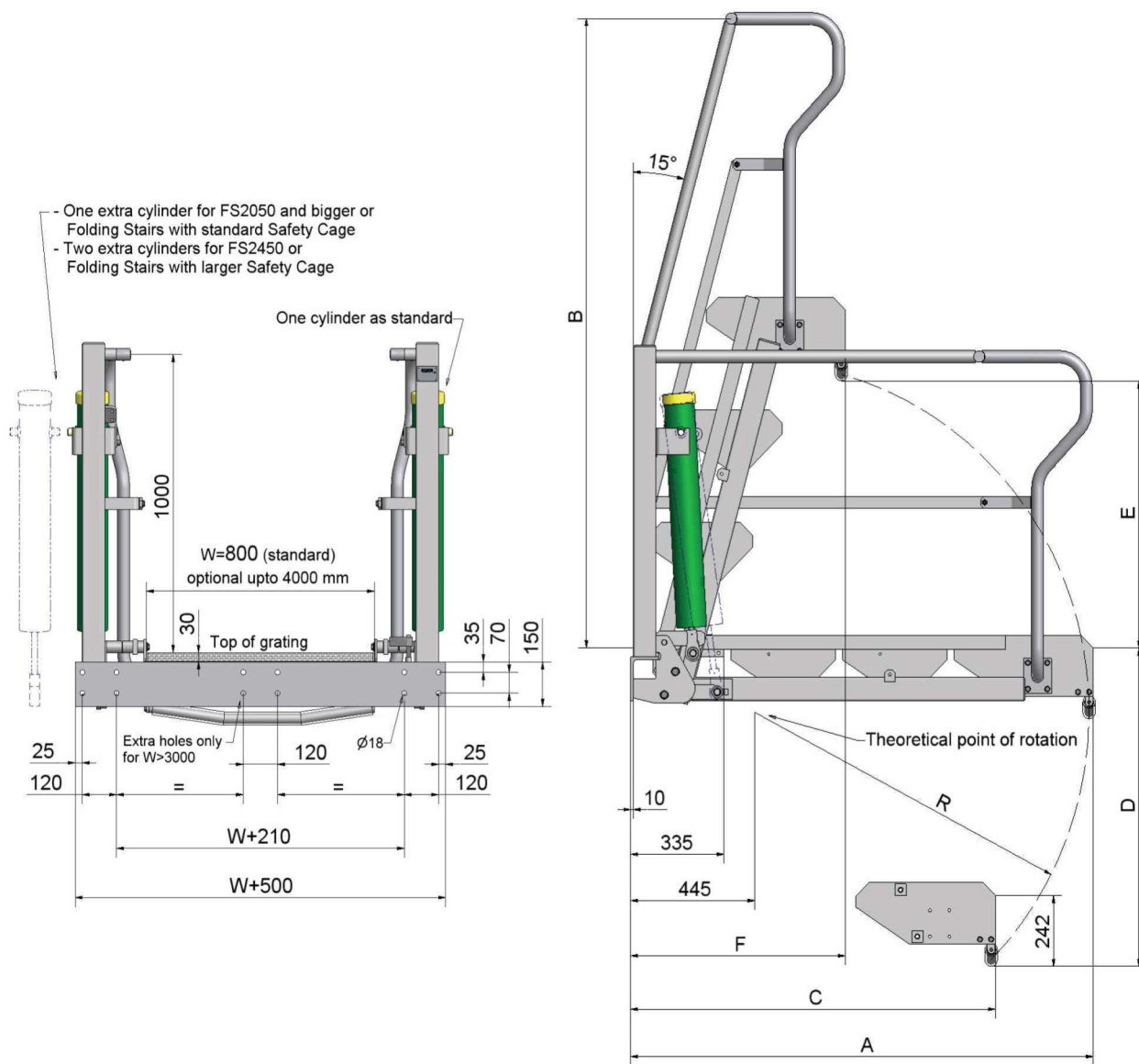
SIZE	D ₁	D ₂
2"	2"	3"
3"	3"	4"
4"	4"	6"

1 Swivel Joint Outerbody
 2 Safety Break Valve
 3 Swivel Joint Flange
 4 Break Bolts

Safety Break Valve

Folding stairs

Dimensions
3, 4, 5 & 6 steps
Bulletin 139001



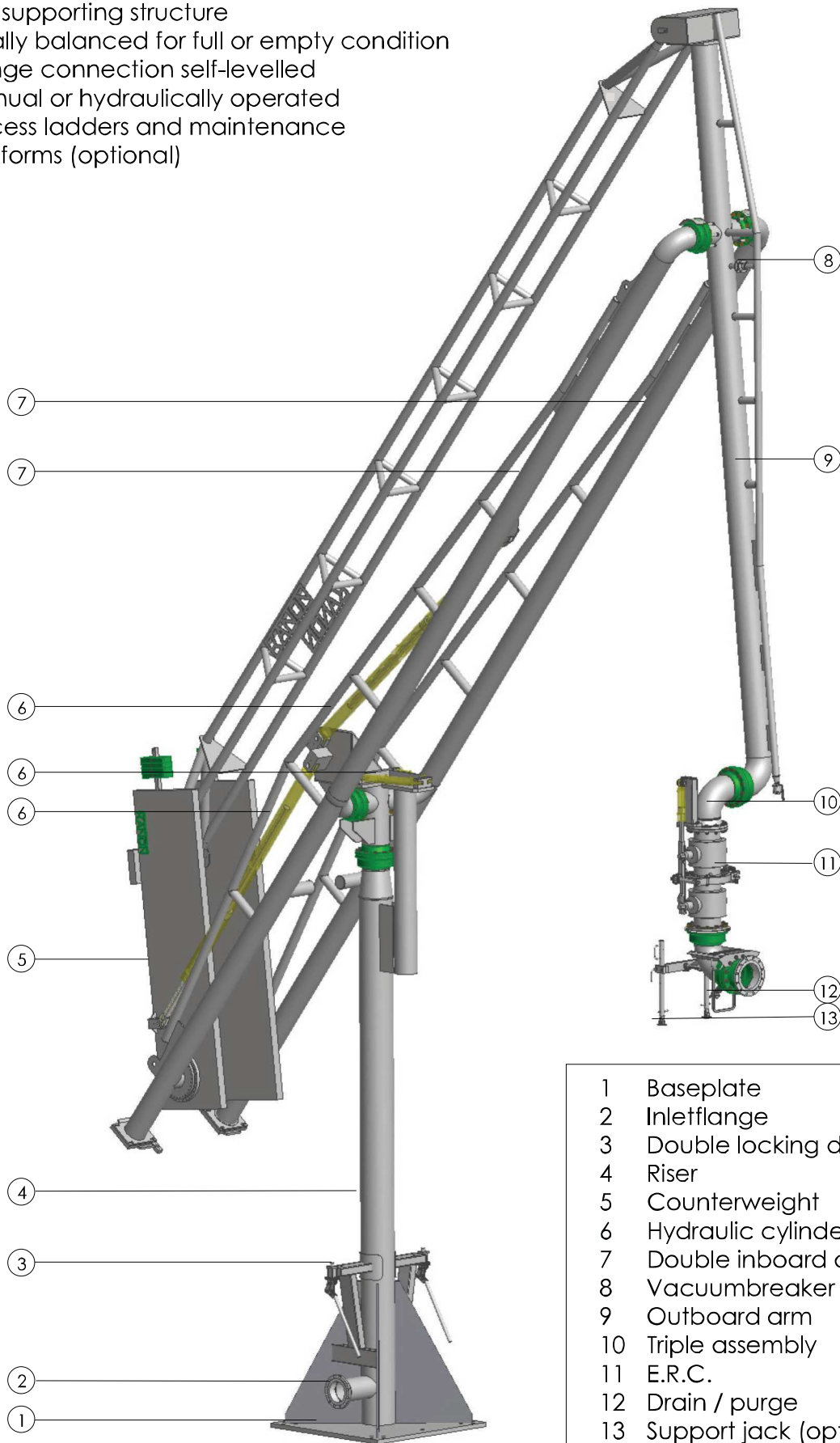
Safety cages can be applied from 1400 mm upto 12 m.

Model	Steps	A	B	C	D	E	F	R
	[n]	[mm]	[mm]	[mm]	[mm]	[mm]	[mm]	[mm]
FS1250	3	1260	1780	1025	805	535	670	800
FS1650	4	1660	2165	1310	1090	920	770	1200
FS2050	5	2060	2550	1595	1375	1305	870	1600
FS2450	6	2460	2935	1880	1660	1690	970	2000

Marine Loading Arms 260

Double Inboard
Hydraulically
operated with E.R.C.
Bulletin 260143

- Self supporting structure
- Totally balanced for full or empty condition
- Flange connection self-levelled
- Manual or hydraulically operated
- Access ladders and maintenance platforms (optional)

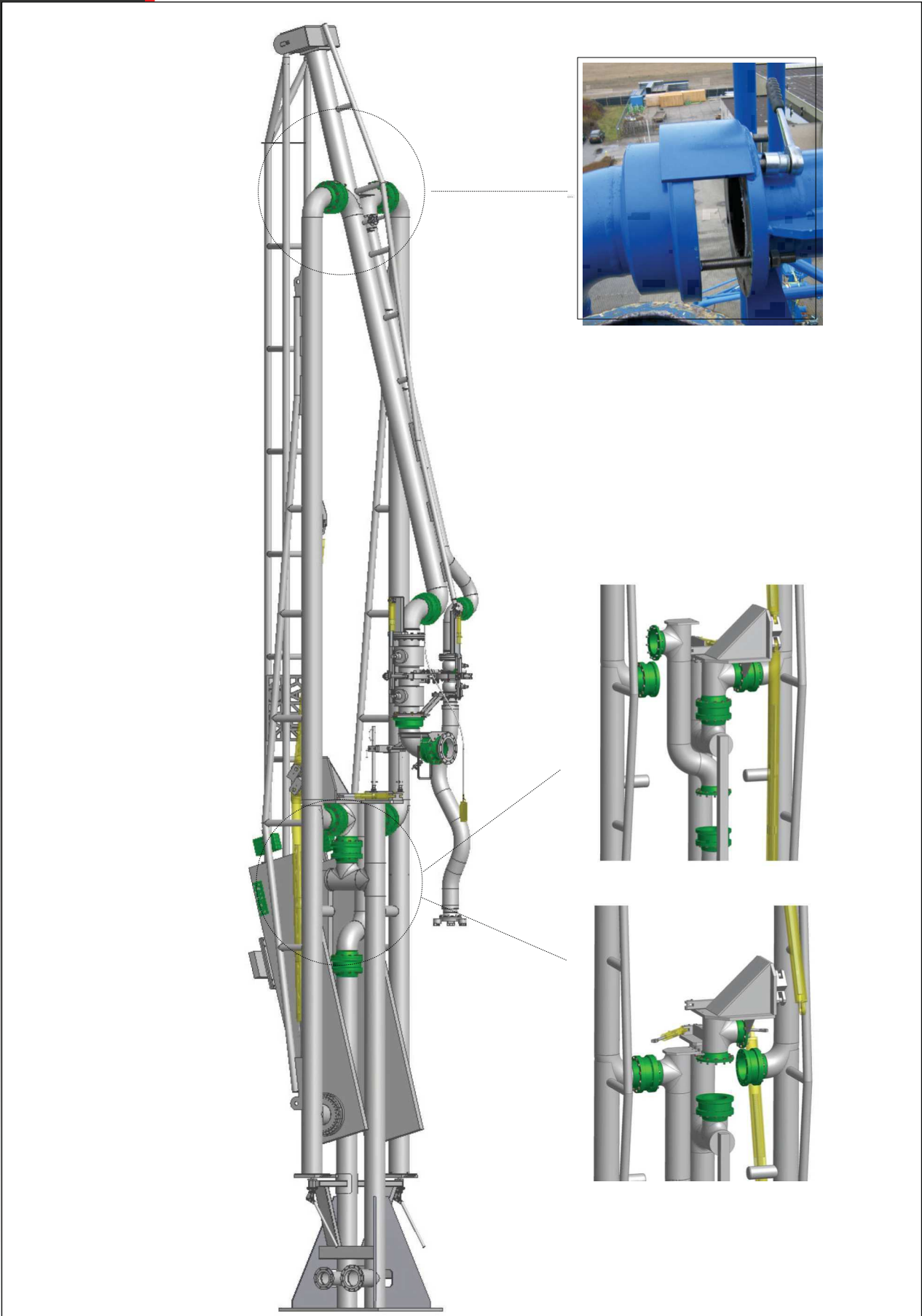


- 1 Baseplate
- 2 Inletflange
- 3 Double locking device
- 4 Riser
- 5 Counterweight
- 6 Hydraulic cylinders
- 7 Double inboard arms
- 8 Vacuum breaker
- 9 Outboard arm
- 10 Triple assembly
- 11 E.R.C.
- 12 Drain / purge
- 13 Support jack (optional)

In-situ seal replacement

At trunnion of Marine
Loading Arm MLA260

Bulletin 260152

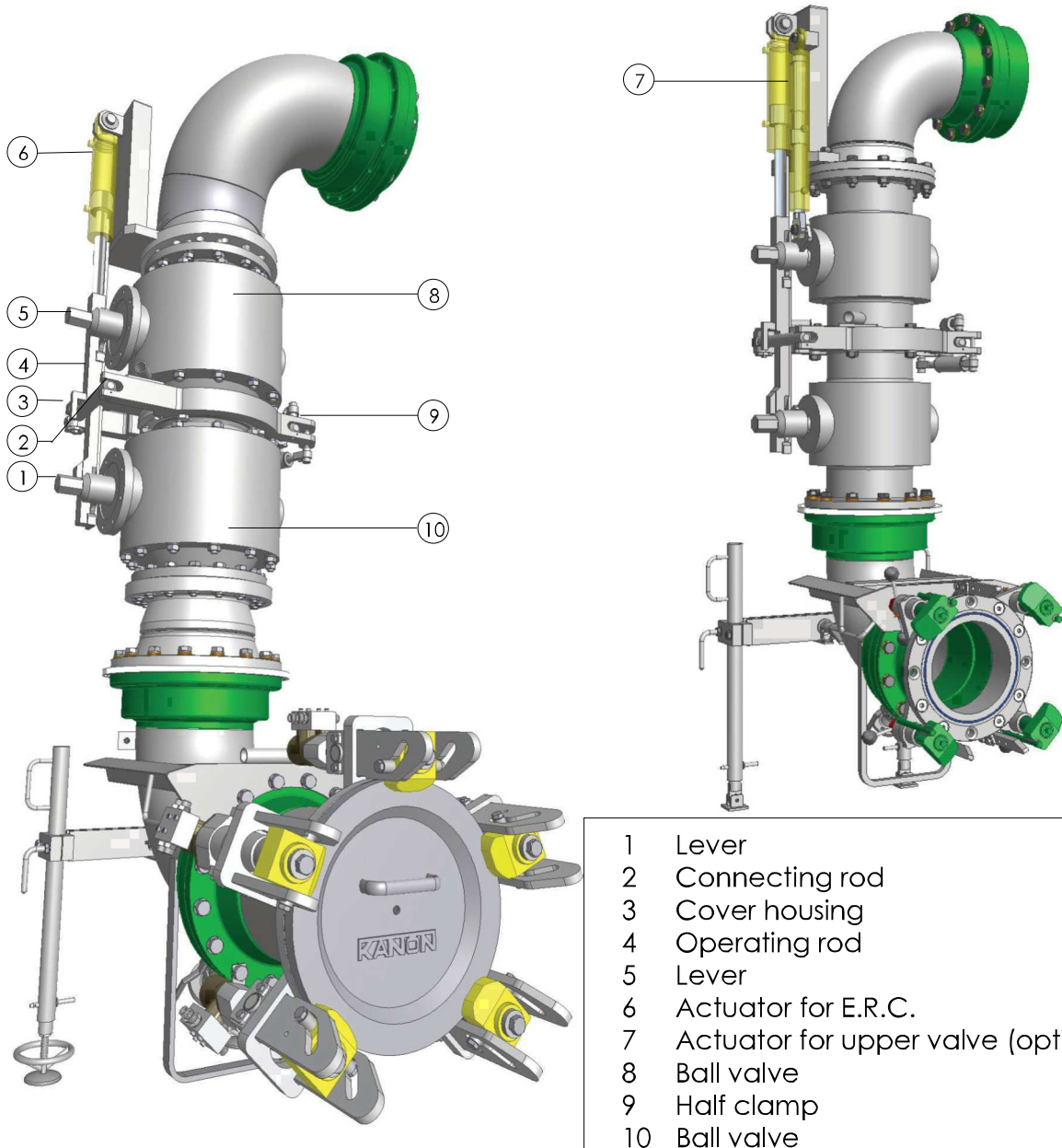


Emergency Release Coupling

For Marine Loading Arm

Bulletin 264022

Kanon's Emergency safety Systems (ERS) are used to ensure best possible safety in fluid loading/unloading operations with Marine Loading Arms. The system allows full automatic and safe disconnection of the loading arm from the ship without product spillage, when the arm exceeds the operating envelope's limitline. By means of a simple and unique design, the Kanon ERS provides intrinsic safety which has been field-proven in many Marine Loading Arms and applications. Kanon's ERS systems and specifically the Emergency Release Coupling are known as 'workhorses' in the fluid transfer industry providing powerfull performance with 'no' maintenance.



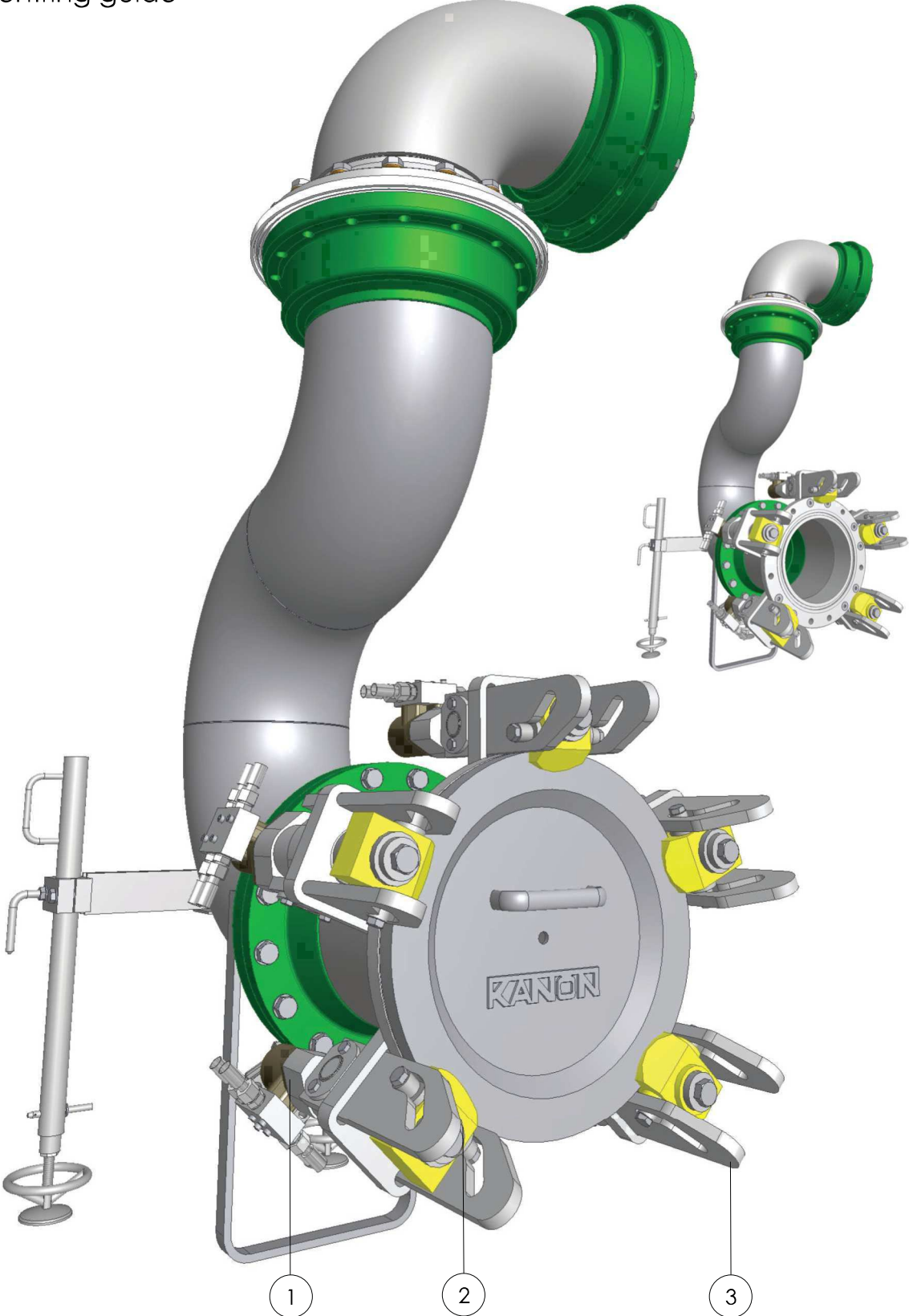
- 1 Lever
- 2 Connecting rod
- 3 Cover housing
- 4 Operating rod
- 5 Lever
- 6 Actuator for E.R.C.
- 7 Actuator for upper valve (option)
- 8 Ball valve
- 9 Half clamp
- 10 Ball valve

Hydraulic QC/DC

For Marine Loading
Arm

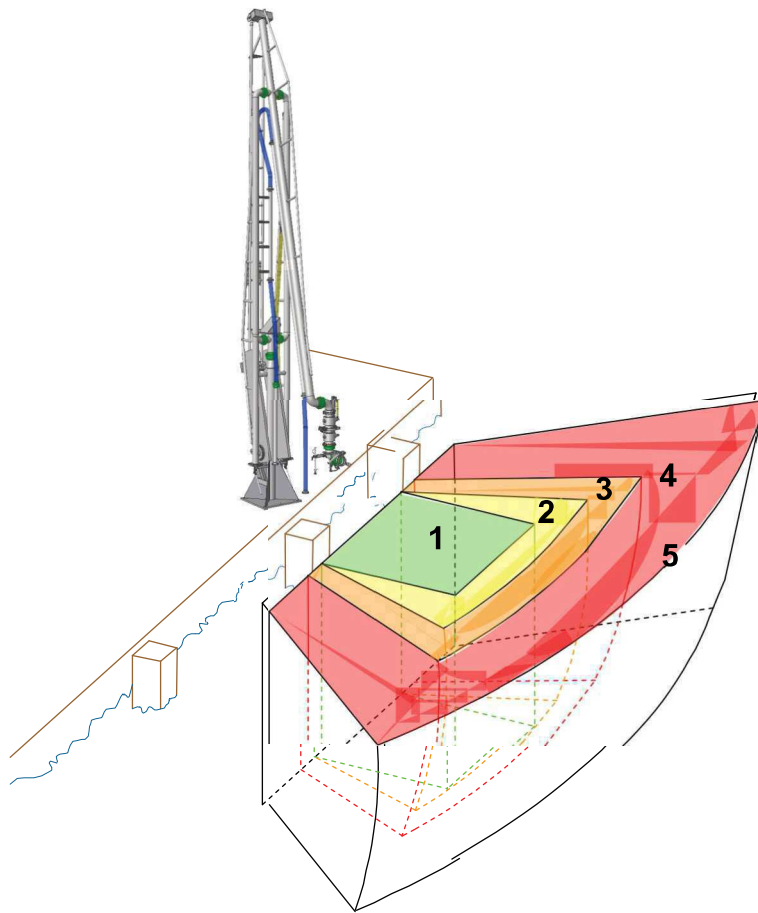
Bulletin 264030

- 1 Hydraulic motor
- 2 Clamp
- 3 Centring guide



Marine Loading Arms

Operating envelope
Bulletin 350037



- 1 Connecting area**
- 2 Operating area:**
This is the real area in which the loading arm can move freely, during loading or unloading.
- 3 Warning area:**
When entering the warning area, pre-alarms (audible, visible) are given to draw operators attention. Stop loading or unloading and try to move the ship back into the operating area.
- 4 Emergency release area:**
Area in which Emergency Release Coupling (ERC) is being activated and finally will break.
- 5 Maximum reach (limit line):**
Movements outside the limit line will cause mechanical damage to the loading arms.

Selected Reference List

From 1982
Top loading arms

END USER	COUNTRY	YEAR	MODEL	SIZE	PRODUCT	QUANT
AKZO NOBEL ALBY	SWEDEN	2014	ILA341	3"	H2O2 HYDROGEN PEROXIDE	2
PCC ROKITA	POLAND	2014	ILA343	4"	VICA80%, ACETIC ACID, ACETIC ACIDE ANYHDRIE	2
D.P.F. FOS TERMINAL	FRANCE	2014	ILA621	4"	GASOIL	1
PCC EXOL	POLAND	2014	ILA342	3"	ROKAMINY, ROKANOL	4
PCC EXOL	POLAND	2014	ILA347	2"	ROKAMINY, ROKANOL	2
DUSLO A.S.	SLOVAKIA	2014	ILA344	2"72"	ANTIOXIDANTS FOR OILS	4
FARMTEC/LOVOCHEMIE	CZECH REPUBLIC	2014	ILA341	4"	AD BLUE	1
AMITEC OY	FINLAND	2014	ILA341	3"	NAOH 50%	1
AMITEC OY	FINLAND	2014	ILA341	2"	NAOH 50%	2
ARKEMA JARRIE	FRANCE	2014	ILA343	3"72"	H2SO4 96% UP TO 98%	1
DOW BENELUX B.V.	NETHERLANDS	2014	ILA341	3"	VDI	1
BGV S.R.O.	SLOVAKIA	2014	ILA344	3"	SPIRIT/ETHYL ALCOHOL 96.6%	1
SOLVAY CHALAMPE	FRANCE	2014	ILA241	3"	HMD	1
MEDIACO VRAC	FRANCE	2014	ILA341	4"	AD BLUE	1
FERTILIZERS & CHEMICALS	ISRAEL	2015	ILA332	3"	AMMONIA WATER	1
LBC LAVEREKA	FRANCE	2015	ILA343	3"	SULFURIC ACID 96%-98%	2
HUNTSMAN	NETHERLANDS	2015	ILA341	3"	METHANOL	1
POWER OIL ROSTOCK	GERMANY	2015	ILA341	4"	VEGETABLE OIL	1
WESTROLE	FRANCE	2015	ILA344	2"	WATER SOLVENT	1
CHEMSTATIONASIA	MALAYSIA	2015	ILA343	3"72"	ACRYLONITRILE	1
PILIPINAS SHELL BATANGAS	PHILIPPINES	2015	ILA340	3"72"	LIQUID SULPHUR	1
RUNCORN MCP LIMITED	UNITED KINGDOM	2015	ILA341	3"	SULPHUR OXIDE	1
INTERNATIONAL PAINT LTD	UNITED KINGDOM	2015	ILA343	4"73"	CHEMICALS	1
DUSLO A.S.	SLOVAKIA	2015	ILA341	4"	SULPHURIC ACID (H2SO4) 96-98%	1
STAR	TURKEY	2015	ILA343	4"	LIQUID SULPHUR, MOLTON SULPHUR	2
NOVAPEK	FRANCE	2015	ILA343	3"	ISOPROPYLIC ALCOHOL	1
HUNTSMAN	NETHERLANDS	2015	ILA343	3"	HCL	3
NEDMAG INDUSTRIES B.V.	NETHERLANDS	2015	ILA341	4"	MAGNESIUM HYDROXIDE SUSPENSION IN WATER	1
NEDMAG INDUSTRIES B.V.	NETHERLANDS	2015	ILA341	3"	MAGNESIUM HYDROXIDE SUSPENSION IN WATER	1
SHELL	NETHERLANDS	2015	ILA343	4"	METHYL DI-PROPYL, METHANOL, MEK	4
KANEKA MALAYSIA	MALAYSIA	2015	ILA344	3"72"	ACRYLONITRILE	1
SITECH MANUFACTURING SERVICES CV	NETHERLANDS	2015	ILA341	2"	SUCCINONITRILE, BUTANEDINITRILE	2
PDVSA CARACAS	VENEZUELA	2015	ILA341	3"	SULPHURIC ACID	2
OIL TANKING STOLTHAVEN ANTWERPEN	BELGIUM	2015	ILA340	4"72"	EDC	3
CRISTAL UNION	FRANCE	2015	ILA343	4"	ETHANOL	2
ARGUS	ROMANIA	2015	ILA342	3"	SUNFLOWER OIL	1
SAUDI ARAMCO RAS TANURA TERMINAL	SAUDI ARABIA	2015	ILA343	4"73"	LIQUID SULFUR	1
CHEMOPROJECT CHEMICALS	SLOVAKIA	2015	ILA343	4"	RAPE SEED, METHYLESTER	1
INA INDUS IRIJA NAFIE	CROATIA	2015	ILA343	3"	PETROL	5
EVONIK DEGUSSA ANTWERP	BELGIUM	2015	ILA341	3"	HYDROGEN PEROXIDE H2O2 50%	1
PRECHEZA A.S.	CZECH REPUBLIC	2015	ILA336	6"	LIQUID SULPHUR	1
SAUDI ARAMCO	SAUDI ARABIA	2015	ILA343	4"73"	FUEL OIL	2
BAKER HUGHES	UNITED KINGDOM	2015	ILA341	2"		5
MERY'S MINERAUX BELGIQUE SA	BELGIUM	2015	ILA341	4"	CARBONATE SLURRY	1
SOLVAY IAVAUX	FRANCE	2015	ILA343	2"	METHYL SALICYLATE	1
BASF MOKIARA (PV)	ITALY	2015	ILA348	3"	TRIME THYLBENZOL CHLORIDE	1
DUSLO A.S.	SLOVAKIA	2015	ILA341	4"	SULPHURIC ACID	1
TRANSNATIONAL BLENDERS BV	NETHERLANDS	2015	ILA341	3"	PETROCHEM	2
EAS IMAN CHEMICAL	MALAYSIA	2015	ILA341	3"	ACRYLONITRILE	2
RAK SWEDEN AB	SWEDEN	2015	ILA341	4"	VEGETABLE OIL	1
LBC LAVERA	FRANCE	2015	ILA344	6"	CAUSTIC SODA 30%	1
DOW	FRANCE	2015	ILA343	4"	METHYLENE CHLORIDE	1
SOLVAY CHEMIE BV	NETHERLANDS	2015	ILA343	2"	PERACETIC ACID 15%	1
COOGE CHEMICALS PTY LTD	AUSTRALIA	2015	ILA342	3"	CAUSTIC - SODIUM SILICATE	2
FLEXSYS CHEMICALS (M) SDN	MALAYSIA	2016	ILA341	2"	LIQUID SULPHUR	2
CRISTAL UNION	FRANCE	2016	ILA343	4"	ALCOHOL BRUI	2
ADM SZAMOTULY	POLAND	2016	ILA341	4"	RAW RAPE OIL (FOOD APPLICATION)	1
AFTON CHEMICAL PROJECT	MALAYSIA	2016	ILA341	3"	ZDDP, 45% NAOH	4
AFTON CHEMICAL PROJECT	MALAYSIA	2016	ILA341	4"	ZDDP, 45% NAOH	4
PDVSA CARACAS	VENEZUELA	2016	MLA260	2"	SULPHUR LIQUID	1
TANK OPSLAG VERBEKE NV	BELGIUM	2016	ILA343	3"	CHEMICALS	8
NEOS GRANGEMOUTH	UNITED KINGDOM	2016	ILA342	2"	ETHER VAPOUR	1
NYRSTAR	NETHERLANDS	2016	ILA331	3"	ZINC SULPHATE	1
HALO INDUSTRY SPA	ITALY	2016	ILA334	2"	NACIO	1
HALO INDUSTRY SPA	ITALY	2016	ILA332	2"	NAOH	1
TEMBEC AVEBENE	FRANCE	2016	ILA342	3"	BLACK LIQUOR	1
KEMIRA CHEMICALS BRADFORD	UNITED KINGDOM	2016	ILA348	3"	ACRYLONITRILE, NITROGEN	2
STOLTHAVEN (WESTPORT) SDN BHD	MALAYSIA	2016	JMC	3"	CHEMICALS	1
GE WATER CRISSEY	FRANCE	2016	ILA342	2"	HELENE	1
MEDIACO VRAC	FRANCE	2016	ILA346	6"	CASTOR OIL (NO FOOD)	1
MEDIACO VRAC	FRANCE	2016	ILA346	6"	VEGETABLE OIL (NO FOOD)	1
OLTCHIM SA	ROMANIA	2016	ILA341	3"	POLYETHER	1
PRECHEZA A.S.	CZECH REPUBLIC	2016	ILA342	3"	H2SO4 94% - 98%	2
BOLIDEN HARJAVALLIA	FINLAND	2016	ILA341	3"	SULPHURIC ACID 93%-98%	1
DUSLO A.S.	SLOVAKIA	2016	ILA343	4"	AMONIA WATER	1
CALACHEM LTD	UNITED KINGDOM	2016	ILA332	3"	SODIUM CYANIDE	1
INTER TERMINALS SEAL SANDS	UNITED KINGDOM	2016	ILA334	3"	METHANOL	1
KEMIRA CHEMICALS OY PORT	FINLAND	2016	ILA341	4"	CHLORATE SOLUTION	1
CHEVRON CAPE TOWN	SOUTH AFRICA	2016	ILA341	3"	MOLTON SULFUR	1
TECHNIPRO	MOROCCO	2016	ILA341	3"	SPL	1
CHEM TRADE AGLOBIS B.V.	NETHERLANDS	2016	ILA344	4"	SULPHURIC ACID 93%-98%	1
NOVAPEX	FRANCE	2016	ILA343	3"	DISOPROPYL ETHER	1
DUSLO A.S.	SLOVAKIA	2016	ILA341	3"	SULPHURIC ACID 93%-98%	1
OLEON RTVELDE	BELGIUM	2016	ILA343	3"	FATTY ACIDS	1
KANEKA MALAYSIA	MALAYSIA	2016	ILA344	3"	ACRYLONITRILE & NITROGEN	1
VALERO PEMBROKE REFINERY	UNITED KINGDOM	2016	ILA343	4"76"	LIQUID SULPHUR, MOLTON SULPHUR	1
NOVYN AS	NORWAY	2016	ILA343	3"	SULPHURIC ACID	1
YARA SUOMI OY	FINLAND	2016	ILA348	3"	AMMONIA	2
SEKAB BIOFUELS & CHEMICALS AB	SWEDEN	2016	ILA331	3"	ACETALDEHYDE LIQUID / VAPOUR	2
NOVYN (SOLWAY) ANTWERPEN	BELGIUM	2016	ILA343	4"	POTASSIUM HYDROXIDE SOLUTION 50%	2

Selected Reference List

From 1982

Bottom loading arms

END USER	COUNTRY	YEAR	MODEL	SIZE	PRODUCT	QUANT
REL MINING SERVICES	SOUTH AFRICA	2014	BLA145	4"	CALCIUM NITRATE SOLUTION	1
DIAGEO	UNITED KINGDOM	2014	BLA146	4"	POT ALE	4
DIAGEO	UNITED KINGDOM	2014	BLS144/145	3/7"	SPIRIT / POL ALE / EFFLUENT	3
OMV PETROM	ROMANIA	2014	BLS144/145	4"3"	LPG	1
OMV PETROM	ROMANIA	2014	BLS144/145	3" - 2"	LPG	1
SABIC JUBAIL	CHINA	2014	BLA145	4"	VARIOUS	13
SAUDI ARAMCO YANBU	SAUDI ARABIA	2014	BLA125/124	3/2"	LPG	6
ROYAL FRIESLAND CAMPINA	NETHERLANDS	2014	BLA144	4"	MILK PRODUCTS	13
CARGILL	GERMANY	2014	BLS144/145	3/2"	FOOD ALCOHOL AND NON ALCOHOL	2
DIAGEO	UNITED KINGDOM	2014	BLA	4"	PAS / EFFLUENT	1
DIAGEO	UNITED KINGDOM	2014	BLS144/145	3/7"	SPIRIT / POT ALE	2
PCC ROKITA	POLAND	2014	BLA145	3"	VICA80%, ACETIC ACID, ACETIC ACIDE ANHYDRIDE	2
ZIV AV ENGINEERING	ISRAEL	2014	BLA144	3/2"	AMMONIA NH3	1
ZIV AV ENGINEERING	ISRAEL	2014	BLA145	3/2"	AMMONIA NH3	2
AMYLUM SLOVAKIA	SLOVAKIA	2014	BLA145	3"	SYRUP	1
N.V. NEDERLANDSE GASUNIE	NETHERLANDS	2014	BLA144/145	3/2"	AMMONIA	1
DUSLO A.S.	SLOVAKIA	2014	BLA145	3"	NITRIC ACID	1
TECHNIPRO	MOROCCO	2014	BLS144/145	3/2"	LPG	1
KNAUF INSULATION	BELGIUM	2014	BLA144	4"	NATURAL/GAS AIR MIXTURE	1
CEPSA	SPAIN	2014	BLS144/145	3/2"	LPG	2
CEPSA	SPAIN	2014	BLS144/145	3/2"	LPG	5
SACHEM EUROPE B.V.	NETHERLANDS	2015	BLA341	3"	EPICHLORHYDINE	1
NAM N.V.	NETHERLANDS	2015	BLA146	2"	NATURAL GAS AND CONDENSATE	2
NAM N.V.	NETHERLANDS	2015	BLA146	3"	NATURAL GAS AND CONDENSATE	2
BORSODCHEM MCHZ	CZECH REPUBLIC	2015	BLS144/145	3/2"	AMMONIA	3
FRIESLAND CAMPINA	NETHERLANDS	2015	BLA145	4"	SMC	1
CARGILL MANCHESTER UK	UNITED KINGDOM	2015	BLA341	4"	GLUCOSE	6
DIAGEO	UNITED KINGDOM	2015	BLA341	3"	WHISKEY	3
HELLENIC PETROLEUM	GREECE	2015	BLA145	3/2"	LPG	1
SONNEBOOM	NETHERLANDS	2015	BLA145	3"	BENZINE, IPA, METHANOL, HEPTANE	2
INFRASEV GMBH & CO HOCHST KG	GERMANY	2015	BLS144/145	3/2"	AMMONIA	1
DIAGEO	UNITED KINGDOM	2015	BLA145	6"	POT ALE	2
DIAGEO	UNITED KINGDOM	2015	BLA145	3"	SPIRIT, POT ALE, EFFLUENT, SPENT LEES	1
DIAGEO	UNITED KINGDOM	2015	BLA145	4"	SPIRIT, POT ALE, EFFLUENT, SPENT LEES	1
DIAGEO	UNITED KINGDOM	2015	BLA145	4"	POT ALE	1
DIAGEO	UNITED KINGDOM	2015	BLS144/145	4/3"	SPIRIT, POT ALE	1
DIAGEO	UNITED KINGDOM	2015	BLA145	3"	SPIRIT	1
DIAGEO	UNITED KINGDOM	2015	BLA145	3"	SPIRIT	1
DIAGEO	UNITED KINGDOM	2015	BLA145	3"	SPIRIT	1
DIAGEO	UNITED KINGDOM	2015	BLA145	3"	ALE	1
MISSION MEASUREMENTS LLC	UNITED STATES	2015	BLA	6"	CALIBRATING FLOW METERS	1
DIAGEO	UNITED KINGDOM	2015	BLA145	3"	SPIRIT	1
ESSO BELGIUM	BELGIUM	2015	BLA152	4"	PETROL	1
SITECH GELEEN	NETHERLANDS	2015	BLA145	3"	AMMONIUM SULPHATE	1
GRUPA AZOTY PROREM SP Z.O.O	POLAND	2015	BLA341	3"	NOXY, PULNO	2
THAI TANK TERMINAL	THAILAND	2015	BLA145	3"	SULPHURIC ACID	1
LYONDELL BASELL BERRE	FRANCE	2015	BLA144	4"	DIISO BUTYLENE	1
	RUSSIA	2015	BLA175	7"	JET FUEL	26
FLUXEL	FRANCE	2015	JUMPERS	12"	K1 PRODUCTS	2
EVONIK AFROGERM	HUNGARY	2015	BLS144/145	2/3"	AMMONIA	2
DSM EMMEN	NETHERLANDS	2015	BLA145	3"	UMI	1
PENIO	CZECH REPUBLIC	2015	BLS144/145	2/3"	AMMONIA	1
AVR CHEMIE	NETHERLANDS	2015	BLS144/145	2/2"	AMMONIA	1
CARGILL MANCHESTER UK	UNITED KINGDOM	2015	BLA341	3"	LIQUID ANIMAL FEED (STILLAGE)	1
FRIESLAND CAMPINA	NETHERLANDS	2015	BLA145	3"	MILK PRODUCTS	4
LBC SOGESTROL	FRANCE	2015	JUMPERS	6"	HYDROCARBONS	1
LBC SOGESTROL	FRANCE	2015	JUMPERS	8"	HYDROCARBONS	1
GASCO RIYADH	SAUDI ARABIA	2015	BLS144/145	3/2"	LPG	48
FLEXSYS CHEMICALS (M) SDN	MALAYSIA	2016	BLA348	4"	LIQUID SULPHUR	2
AFRIQUIA GAZ	MOROCCO	2016	BLS144/145	3/2"	LPG	3
DIAGEO	UNITED KINGDOM	2016	BLA145	4"	SPIRIT	1
FRIESLAND CAMPINA	GERMANY	2016	BLA145	3"	MILK PRODUCTS	2
INEOS GRANGEMOUTH	UNITED KINGDOM	2016	BLA144	3"	ETHER	1
E.ON ROTTERDAM	NETHERLANDS	2016	BLA145	3"	HEAVY OIL	1
DIAGEO	UNITED KINGDOM	2016	BLA145	3"	SPIRIT	1
DIAGEO	UNITED KINGDOM	2016	BLA145	4"	SPIRIT	1
BAM SCHIPHOL	NETHERLANDS	2016	BLA145	3"	SALT IN KALIUM-FORMIAAT	1
NORGAL	FRANCE	2016	BLA144	3"	LPG	4
SUNRISE ENERGY GAS PLANT	SOUTH AFRICA	2016	BLS144/145	3/2"	LPG	3
SYNGENTA HODDERSFIELD	UNITED KINGDOM	2016	BLS144/145	3/2"	METHYL CHLORIDE	1
CHEVRON ORONITE PTE LTD	FRANCE	2016	BLA144	6"	OIL ADDITIVE	1
TECHNIPRO	MOROCCO	2016	BLS144/145	3/2"	LPG	2
DIAGEO	UNITED KINGDOM	2016	BLA145	4"	SPIRIT, POT ALE	2
DIAGEO	UNITED KINGDOM	2016	BLA145	4"	SPIRIT, POT ALE	2
DIAGEO	UNITED KINGDOM	2016	BLA145	4"	SPIRIT, POT ALE	2
FRIESLAND CAMPINA	NETHERLANDS	2016	BLA145	4"	RAW MILK	4
PROCTER & GAMBLE AMIENS	FRANCE	2016	BLA145	3"	C12, C14, AMINE OXIDE	1
PROCTER & GAMBLE AMIENS	FRANCE	2016	BLA341	3"	C12, C14, AMINE OXIDE	1
ORIGIN AUSTRALIA	AUSTRALIA	2016	BLS144/145	3/2"	LPG	3
CHEVRON REFINERY	SOUTH AFRICA	2016	BLA145	4"	HYDROCARBONS SLOPS	1
CHEVRON REFINERY	SOUTH AFRICA	2016	BLS144/145	3/2"	LPG	2
DIAGEO	UNITED KINGDOM	2016	BLA145	3"	SPIRITS	1
DIAGEO	UNITED KINGDOM	2016	BLA145	3"	SPIRITS	1
DIAGEO	UNITED KINGDOM	2016	BLA145	3"	SPIRITS	1
NESTE	FINLAND	2016	BLA152	6"	JET FUEL	2
ADDIVANT SAS	FRANCE	2016	BLS144/145	3/2"	SOMALYENE	1
ARKEMA CARLING	FRANCE	2016	BLA145	3"	GLYCERINE	1
DSM EMMEN	NETHERLANDS	2016	BLA145	3"	PTHF-2000 (COPOLYMER)	1
UNIPETROL	CZECH REPUBLIC	2016	BLS144/145	3/2"	SOBUTANE/NITROGEN	2
DIAGEO	UNITED KINGDOM	2016	BLA341	3"	SPIRIT	1
NORGAL	FRANCE	2016	BLA144	4"	LPG	4
DCT TERMINAL B.V.	NETHERLANDS	2016	BLS144/145	3/2"	AMMONIA	2

Selected Reference List

From 1982
**Marine Loading
Arms MLA260**

END USER	COUNTRY	YEAR	MODEL	SIZE	PRODUCT	QUANT
STATOIL KARSTO	NORWAY	2015	MLA260	10"	GASOLINE, NAPHTHA, PROPANE	3
STATOIL KARSTO	NORWAY	2015	MLA260	12"	GASOLINE, NAPHTHA, PROPANE	2
SUNOCO LOGISTICS LLC	UNITED STATES	2015	MLA260	8"/4"	CRUDE OIL	1
POSCO	KOREA	2015	MLA260	12"/8"	LPG	1
DUGAS	UNITED ARAB EMIRATES	2015	MLA260	8"	PROPANE	1
RAFFINERIE DU MIDI	FRANCE	2015	MLA260	10"	HYDROCARBONS	1
INTERCONTINENTAL TERMINALS COMPANY	UNITED STATES	2015	MLA260	16"	GASOLINE, DIESEL	2
PORT OF FUJAIRAH	UNITED ARAB EMIRATES	2015	MLA260	20"	CRUDE OIL, FUEL OIL	4
CEPSA	SPAIN	2015	MLA260	6"/3"	LPG	1
REGIS LIMITED	INDIA	2015	MLA260	10"	LPG	1
REGIS LIMITED	INDIA	2015	MLA260	12"	LPG	2
OILTANKING STOLTHAVEN ANTWERPEN	BELGIUM	2015	MLA260	8"/8"	EDC	1
HYDROCARB	MOROCCO	2015	MLA260	12"	HYDROCARBONS, LPG	3
TOTAL OLEFFINS ANTWERP	BELGIUM	2015	MLA260	8"/4"	PFO	1
ATPC	BELGIUM	2015	MLA260	8"/6"	GAS OIL, NAPHTHA	1
CTS CHILE	CHILE	2015	MLA260	10"	K1 PRODUCTS	2
IAMANNETEGAS	RUSSIA	2015	MLA260	16"	K1 PRODUCTS	2
PE TROPERU	PERU	2015	MLA260	8"	HYDROCARBONS	2
PETROPERU	PERU	2015	MLA260	10"	HYDROCARBONS	5
PE TROPERU	PERU	2015	MLA260	12"	HYDRPCARBONS	1
PETROPERU	PERU	2015	MLA260	10"	SULPHURIC ACID	1
OXY INGLESIDE 1X	UNITED STATES	2015	MLA260	12"/8"	CRUDE OIL	1
OXY INGLESIDE 1X	UNITED STATES	2015	MLA260	12"/10"	CRUDE OIL	2
OXY INGLESIDE 1X	UNITED STATES	2015	MLA260	12"	CRUDE OIL	2
OXY INGLESIDE 1X	UNITED STATES	2015	MLA260	16"	CRUDE OIL	3
LIQUIGAS	NEW ZEALAND	2015	MLA260	6"	LPG	1
YAMAL OIL	RUSSIA	2015	MLA260	12"	ARCTIC DIESEL OIL, BENZENE, JET OIL	1
YAMAL OIL	RUSSIA	2015	MLA260	12"	KEROSENE	1
SARAS RAFFINERIA DI SARROCH	ITALY	2015	MLA260	16"	CRUDE OIL, COMBUSTABLE OIL	2
NESTE NETHERLANDS	NETHERLANDS	2015	MLA260	6"/3"	PROPANE	1
SEA TANK TERMINAL ANTIWERPEN	BELGIUM	2015	MLA260	16"	GAS OIL, FUEL OIL	2
PT PANCA AMAKA UTAMA	INDONESIA	2015	MLA260	10"/8"	AMMONIA	1
AQABA OIL TERMINAL	JORDAN	2015	MLA260	8"	PHOSPHORIC ACID, AMMONIA	3
AQABA OIL TERMINAL	JORDAN	2015	MLA260	12"	PHOSPHORIC ACID, AMMONIA	1
SOUTH PACIFIC	PHILIPPINES	2015	MLA260	10"/6"	LPG	1
VOPAK TERMINAL EUROPOORT BV	NETHERLANDS	2015	MLA260	16"	FUELS	1
ANTIWERP TERMINAL & PROCESSING COM	BELGIUM	2015	MLA260	12"	BITUMEN	1
ANTIWERP TERMINAL & PROCESSING COM	BELGIUM	2015	MLA260	16"	FUEL OIL	1
PREEM RAFFINADERI	SWEDEN	2015	MLA260	8"	ETHANOL	1
WANHUA CHEMICAL GROUP CO. LTD.	CHINA	2015	MLA260	12"	LPG	2
KANEKA MALAYSIA	MALAYSIA	2015	MLA260	8"/3"	BUTADIENE	1
SHELL PORT DICKSON MALAYSIA	MALAYSIA	2015	MLA260	6"/4"	LPG	1
KOOLE TERMINALS BV	NETHERLANDS	2015	MLA260	12"	GTL, FUEL OIL	1
KOOLE TERMINALS BV	NETHERLANDS	2015	MLA260	16"	GTL, FUEL OIL	1
ARABTANK TERMINALS	SAUDI ARABIA	2015	MLA260	16"	HYDROCARBONS	2
SHELL BRAEFoot BAY	UNITED KINGDOM	2015	MLA260	12"	LPG	4
SEA-TANK TERMINAL PETROLIER DAKAR	MOROCCO	2016	MLA260	16"/8"	FO, GO, JET, DIESEL	2
SEA-TANK TERMINAL PETROLIER DAKAR	MOROCCO	2016	MLA260	16"	FO, GO, JET, DIESEL, BITUMEN	4
SEA-TANK TERMINAL PETROLIER DAKAR	MOROCCO	2016	MLA260	16"	BITUMEN	2
SEA-TANK TERMINAL PETROLIER DAKAR	MOROCCO	2016	MLA260	12"	FO, GO, JET, DIESEL	2
SEETEC KOREA	KOREA	2016	MLA260	6"	ACKRYNOLITRILLE	1
BURGAN CAPTE TERMINALS	SOUTH AFRICA	2016	MLA260	12"	GASOLINE, DIESEL, JET-A1, CRUDE OIL	2
KINDERMORGAN TERMINALS HOUSTON	UNITED STATES	2016	MLA260	16"	GASOLINE, ULSD, CLEAN PRODUCTS	2
MAASVLAKTE OIL TERMINAL	NETHERLANDS	2016	MLA260	20"	CRUDE OIL	4
SOLDEN HARJAVALLIA	FINLAND	2016	MLA341	3"	SULPHURIC ACID 75%	1
REPSOL PORTUGUESA S.A.	PORTUGAL	2016	MLA260	8"	PROPYLENE LIQUID	1
SEA TANK TERMINAL ANTIWERPEN	BELGIUM	2016	MLA260	10"/10"	TOLUENE XYLENE	1
SEA TANK TERMINAL ANTIWERPEN	BELGIUM	2016	MLA260	6"	BUTANE	1
BOREALIS POLYMERS	FINLAND	2016	MLA260	12"/4"	LPG	1
ZEELAND REFINERY N.V.	NETHERLANDS	2016	MLA260	8"/6"	HYDROCARBONS, BENZENE	4
ZEELAND REFINERY N.V.	NETHERLANDS	2016	MLA261	10"/6"	HYDROCARBONS, BENZENE	1
ZEELAND REFINERY N.V.	NETHERLANDS	2016	MLA262	8"/6"	HYDROCARBONS, BENZENE	3
EURONERGO	SPAIN	2016	MLA260	16"	HYDROCARBONS, BENZENE	2
KOOLE TERMINALS BV	NETHERLANDS	2016	MLA260	16"	FO, VGO	1
KOOLE TERMINALS BV	NETHERLANDS	2016	MLA260	12"	SO, FO, VGO	2
SAUDI ARAMCO	SAUDI ARABIA	2016	MLA260	16"	HYDROCARBONS, BENZENE	4
TOTAL INDIA	INDIA	2016	MLA260	8"	LPG, PROPANE, BUTANE, PROPYLENE	2
PENGERANG INDEPENDENT TERMINALS	MALAYSIA	2016	MLA260	20"	HYDROCARBONS	3
PENGERANG INDEPENDENT TERMINALS	MALAYSIA	2016	MLA260	16"	HYDROCARBONS	7
PENGERANG INDEPENDENT TERMINALS	MALAYSIA	2016	MLA260	12"	HYDROCARBONS	2
PENGERANG INDEPENDENT TERMINALS	MALAYSIA	2016	MLA260	10"	HYDROCARBONS	10
PENGERANG INDEPENDENT TERMINALS	MALAYSIA	2016	MLA260	8"/4"	HYDROCARBONS	2
NORTHSTAR MIDSTREAM LLC	UNITED STATES	2016	MLA260	12"	DISTILLATE	3
SOLVAY N.V.	BELGIUM	2016	MLA260	6"	KOH50%, KOH22%	1
SHELL SINGAPORE	SINGAPORE	2016	MLA260	10"	BITUMEN	1
GULF PETROCHEMICAL INDUSTRIES	BAHRAIN	2016	MLA260	10"	AMMONIA, METHANOL	2
NUSTAR TERMINALS BV	ST. EUSTATIUS	2016	MLA260	12"	HYDROCARBONS	1
PEIRONAS KERIEH TERMINAL SDN BHD	MALAYSIA	2016	MLA260	8"/4"	AMMONIA	1
SHELL EUROPOORT	NETHERLANDS	2016	MLA260	12"	NAFTA	2
REGIS LIMITED	INDIA	2016	MLA260	10"/10"	BUTANE, LPG, PROPANE	2
COPENHAGEN TERMINAL PROVESTENER	DANMARK	2016	MLA260	10"	HYDROCARBONS	1
ZEELAND REFINERY N.V.	NETHERLANDS	2016	MLA260	8"	HYDROCARBONS	2
ZEELAND REFINERY N.V.	NETHERLANDS	2016	MLA260	8"/6"	HYDROCARBONS	2
IGA AIRPORT	TURKEY	2016	MLA260	10"	JET FUEL	1
IGA AIRPORT	TURKEY	2016	MLA260	12"	JET FUEL	3
IGA AIRPORT	TURKEY	2016	MLA260	16"	JET FUEL	1
DOUGLAS TERMINAL NV	BELGIUM	2016	MLA260	12"/8"	DIESEL, FUELS	3
BUCKEY TERMINAL SAINT LUCIA LTD	SAINT LUCIA	2016	MLA260	16"	ULSD & CRUDE OIL	5
ENIRAFFINERIA DI IARANTO	ITALY	2016	MLA260	8"	BITUMEN, VAPOUR, BLACK OI, WHITE OIL	4
ENIRAFFINERIA DI IARANTO	ITALY	2016	MLA260	10"	BITUMEN, VAPOUR, BLACK OI, WHITE OIL	2
BASE ANTIWERPEN	BELGIUM	2016	MLA260	6"/4"	ETHANOL, ACETONE	1

KANON卸料臂擁有現代化且設備齊全的服務部門，
專門從事槽車卸料臂，船舶卸料臂。



擁有40年的卸料臂設計經驗，
我們提供以下服務：

- 製作安裝
- 試運轉
- 定期檢查
- 維護、修理和改裝
- 操作員的工作培訓與維護

引領全球的服務，總部設立於澤沃德(荷蘭)

我們具備經驗豐富及技術優秀的工程師為您提供服務。

大型化工和石化公司，如Akzo、DSM、Shell、Totalfina、BP、Vopak、Cargill等...

我們優質的服務，取決於我們的可靠性及高性能。

崑政公司為KANON專業卸料臂設備公司在台唯一代理商；

秉持20多年的工業技術及服務提供對於卸料臂安裝、維修及售後服務等，

原廠培訓方式建立卸料臂售後維修及服務能力。

為什麼選擇我們？

- 產品的卓越品質及服務和定期檢查
- 我們提供產品的最佳範圍
- KANON製造商，可以完全提供所有技術數據。
- 磨損或損壞的部件可以快速更換，隨時提供各式備品零件
- KANON卸料臂產品減少維護和運作成本
- 客製化服務，我們的產品設備可提供任何修改

THERE IS
SO MUCH MORE
TO TELL ABOUT
OUT LOADING
SYSTEMS...



YOUR PARTNER IN HIGH QUALITY LOADING AND SAFETY SYSTEMS

KANON is a company specialising in loading technology employing experts involved in a continuing programme of development using the very latest techniques and ideas.

KANON has worldwide representation via agents, distributors and a network of associated companies. For further information and to obtain a quotation for your requirements, please contact us either directly at our office in Holland or via our associated companies, details of which are shown below.

General programme

- * Marine loading arms
- * Telescopic arms
- * Swivel joints
- * Jumper assemblies
- * Floating suctions
- * Top and bottom loading arms
- * Grounding devices for road tankers rail tankers and ships
- * Batch systems, including fluid meters
- * Field service
- * Folding stairs
- * Vapour recovery systems
- * Platforms
- * Training

崑政企業有限公司

TEL : 04-24350378

FAX : 04-24350376

台中市北屯區建和路二段219巷11號

www.cust-technology.com

KANON
LOADING EQUIPMENT